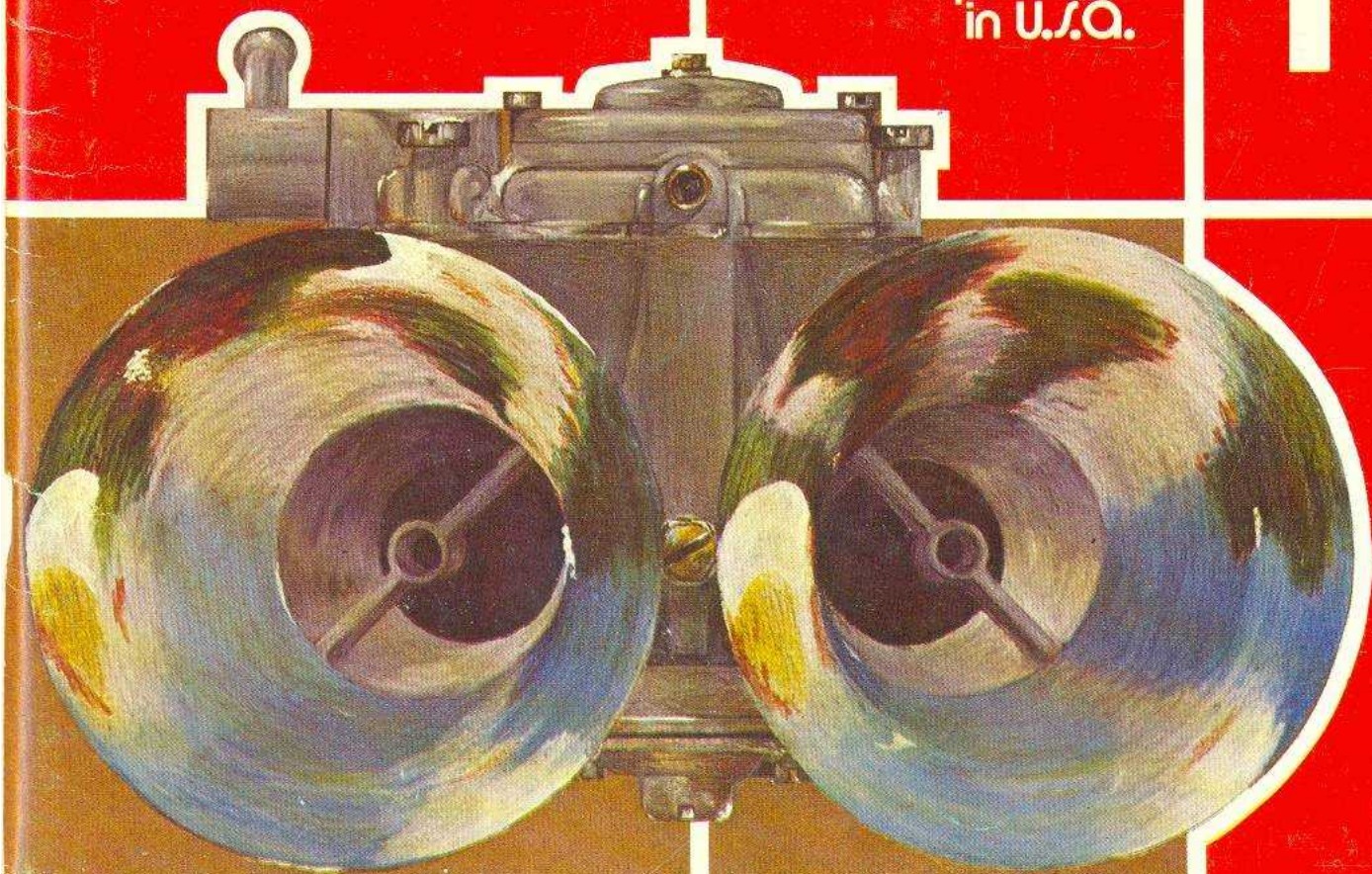


Datsun Competition Parts

Nissan
Motor
Corporation
in U.S.A.



\$200



FOREWORD

Whether you actually race, rally, or just want your Datsun to perform like a race car, you'll find just about everything you'll need listed in this catalog.

When you buy competition parts from your Datsun dealer, you know you're getting the best equipment available anywhere. All Datsun competition parts are tested and proven on the race track before they are made available to the public. The Datsun Competition Department works very closely with racers throughout the country, outside manufacturers, and through its own racing research and development programs — all to make sure you have the latest parts you'll need to be competitive.

Order all your competition parts directly from your Datsun Dealer. As new products are developed or present equipment improved, the parts list will be updated. Your Datsun dealer will always have the latest information on all competition parts.

If you ever need information concerning competition preparation, parts availability or technical assistance of any type, you can contact the Datsun Competition Department directly by writing to the following address:

Datsun Competition Department
Post Office Box 191
Gardena, California 90247

Competition parts are sold "as is" without any warranty whatsoever. Implied warranties, including warranties of merchantability or fitness for a particular purpose, are excluded. The entire risk as to quality and performance of such parts is with the buyer. Should such parts prove defective following their purchase, the buyer and not the manufacturer, distributor or retailer, assumes the entire cost of all necessary servicing or repair.

The Datsun vehicle and parts warranties are voided if the vehicle or part is used for competition or if they fail as a result of modification.

Vehicles modified by use of competition parts may no longer be lawfully used on public roads. You are urged to check your state and local laws before installing competition parts on vehicles intended for use on public roads.

Availability of certain items shown in this catalog is limited and these items may not be available for immediate delivery.

Prepared for the Competition Department
by Technical Communications Department,
Nissan Motor Corporation in U.S.A.



April 1976

Digitalizado por: Américo José Pinho
srpinho@hotmail.com
www.amigosjaponesesantigos.com
2005

Table of Contents

240-Z / 260-Z / 280-Z

Forged Pistons	2
Cast Pistons	2
Connecting Rods	2
Crankshaft and Engine Block	3
Head Gasket	3
Valves	3
Valve Lash Pads	3
Camshaft	4
Lubrication System	4
Pulleys	5
Radiator	6
Fuel System	6
Distributor	6
Exhaust System	7
Flywheel and Clutch	8
Drive Train	8
Differentials	9
Ring and Pinion Sets	11
Differential Oil Cooler	11
Speedometer Pinions	12
Steering Components	13
Brakes	13
Suspension	14
Stabilizer Bars	16
Replacement Body Panels (Fiberglass)	17
Miscellaneous	19

510 / 610 / 710

Forged Pistons	20
Cast Pistons	20
Connecting Rods	21
Engines	21
Crankshaft	21
Cylinder Head	21
Head Gasket	21
Valves	22
Valve Lash Pad	22

Camshaft	22
Lubrication System	23
Radiator	23
Pulleys	24
Fuel System	24
FIA Engine Kit	25
Electrical System	25
Exhaust System	26
Flywheels and Clutch	26
Transmissions	26
Differentials	28
Ring and Pinion Sets	29
Differential Oil Cooler	29
Brakes	30
Suspension	30
Replacement Body Panels (Fiberglass)	31

1200 / B210

Forged Piston	32
Cast Piston	32
Bearings	32
Engines	32
Cylinder Head	33
Valves	33
Camshaft	33
Lubrication System	34
Pulleys	34
Fuel System	34
Exhaust System	36
Electrical System	36
Flywheel and Clutch	36
Transmissions	36
Differential	37
Ring and Pinion	37
Differential Oil Cooler	38
Brakes	38
Suspension	38
Replacement Body Panels (Fiberglass)	38

1600 / 2000 SPORTS CAR

Pistons	40
Bearings	40
Valves	40
Camshaft	41
Gaskets	41
Lubrication System	41
Pulleys	42
Fuel System	42
Electrical System	42
Flywheel and Clutch	42
Transmission	42
Differential	43
Ring and Pinion	43
Speedometer Pinion	44
Brakes	44
Suspension	45
Fiberglass Fender Flares	45

MISCELLANEOUS

Solex Main Jets	46
Solex Air Jets	46
Solex Pilot Jets	46
Solex Chokes	46
Solex Needle and Seat Assembly	46
Spark Plugs	46
Special Tools	47
Posters	47
Die Cut Transfers	48

24
26
28

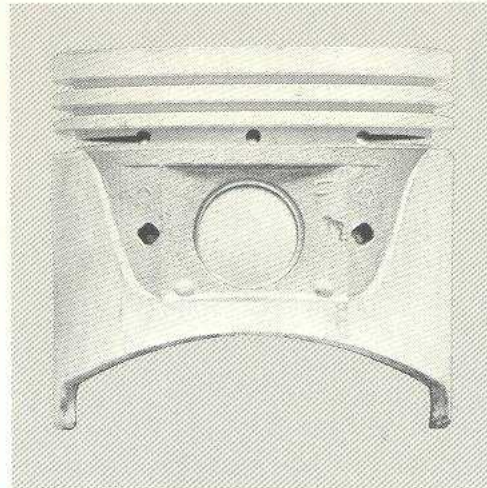


FORGED PISTON

All forged pistons are .040 oversize and have approximately 11.5 to 1 compression ratio. Use of any of these forged pistons requires cylinder head modifications. All forged pistons are designed to be used with L24 rods.



CAST PISTON



part number **description** **quantity**

FORGED PISTONS

99996-M1012	L24 Forged Piston, with Pin and Spirlox	6
99996-M1013	L26 Forged Piston, with Pin and Spirlox	6
99996-N1011	L28 Forged Piston, with Pin and Spirlox	6
99996-M1021	L24/L26 Ring Set to be used with Forged Pistons	1
99996-N1021	L28 Ring Set to be used with Forged Pistons	1
99996-M1016	Piston Pin for all Forged Pistons (pins are slightly longer than necessary and must be sized before using)	6
99996-M1025	Spirlox for all Forged Pistons	12

CAST PISTONS

12010-E3118	L24 Cast Piston with Pin (.060 oversize)	6
12040-E3100	L24 Ring Set for Cast Piston (.060 oversize)	1

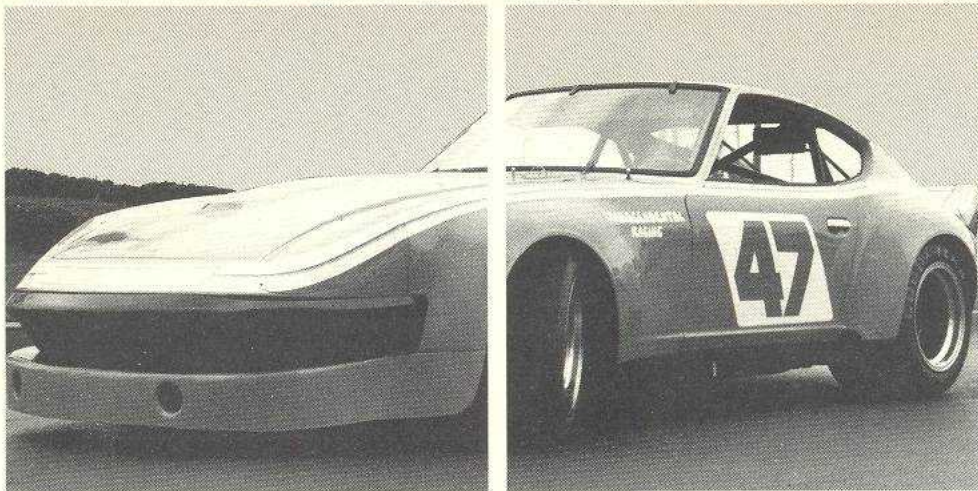
CONNECTING RODS

12100-N0102	L24 Stock Connecting Rod (used with all forged pistons)	6
12100-A8703	L26/L28 Stock Connecting Rod	6
12111-22010	Rod Bearings, approximately .001" thinner for increased oil clearance	12
99996-E1090	Main Bearing Set, approximately .001" thinner for increased oil clearance	1

part number **description** **quantity**

CRANKSHAFT & ENGINE BLOCK

11010-N2400 SV	L28 Bare Block	1
12201-P3000 SV	L26/L28 Stock Crankshaft	1
99996-E1000	L28 Full Race Engine (special order only)	1



HEAD GASKET

11044-E4620	L24/L26 Competition Head Gasket	1
11044-E4621	L28 Head Gasket, thickness 1.2mm. Requires use of 11045-E4621 "O" type Sealing Ring	1
11045-E4621	Sealing Ring, thickness 3.05 mm, diameter 87 mm. Use of Sealing Ring type Head Gasket requires modifications to the Cylinder Block.	6

part number **description** **quantity**

VALVES

13201-E4620	L24/L26 1.65" Factory Modified Intake Valve	6
99996-M1030	L24/L26 1.65" Racing Intake Valve (lightened, polished and tuliped)	6
99996-N1100	L28 1.73" Racing Intake Valve (lightened, polished and tuliped)	6
99996-N1120	Steel Intake Valve Seat for 99996-N1100 Intake Valve	6
99996-M1040	L24 1.299" Racing Exhaust Valve (lightened, polished and tuliped)	6
99996-D1034	L26/L28 1.378" Racing Exhaust Valve (lightened, polished and tuliped)	6
99996-M1045	Racing Valve Spring	12
99996-M1150	Aluminum Valve Spring Retainer	12
99996-M1050	Titanium Valve Spring Retainer	12

VALVE LASH PADS

are required to obtain correct rocker arm geometry when installing reground camshaft.

99996-M1180	.180" Valve Lash Pad	12
99996-M1230	.230" Valve Lash Pad	12
99996-M1240	.240" Valve Lash Pad	12
99996-M1260	.260" Valve Lash Pad	12
99996-M1270	.270" Valve Lash Pad	12
99996-M1280	.280" Valve Lash Pad	12
99996-M1290	.290" Valve Lash Pad	12
99996-M1300	.300" Valve Lash Pad	12

part number	description	quantity
-------------	-------------	----------

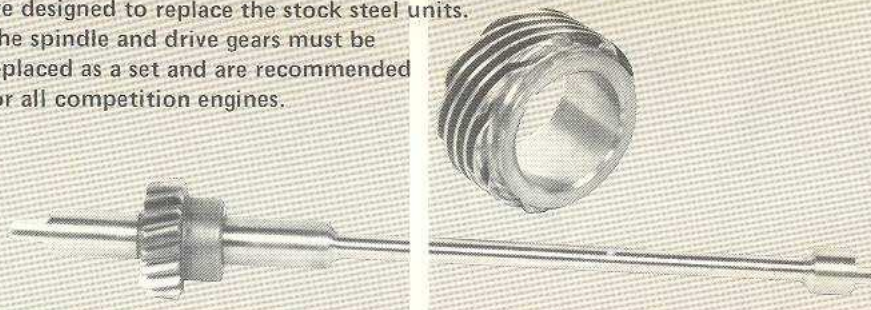
CAMSHAFT

99996-E1031	Slalom Camshaft, .475" Lift, 275° duration	1
99996-E1038	Slalom Camshaft Kit. Includes Cam, Springs, Retainers, Valve Lash Pads, Rocker Arms, Keepers and Gasket Kit. Specify Engine displacement when ordering.	1
99996-E1023	Competition Camshaft, 540" Lift, 314° duration, 103° Lobe Centers	1
99996-E1050	Competition Camshaft, 595" Lift, 300° duration, 106° Lobe Centers	1
13001-E4651	Unground Camshaft Billit	1

Because of the variable rocker arm ratio on L-series engines, lift and duration figures may vary slightly from engine to engine.

OIL PUMP/DISTRIBUTOR DRIVE SPINDLE & BRASS DRIVE GEAR

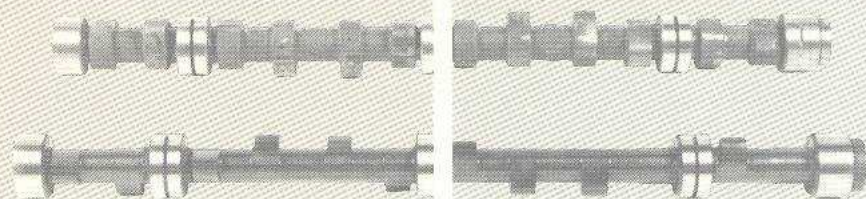
This oil pump/distributor drive spindle and brass drive gear are designed to replace the stock steel units. The spindle and drive gears must be replaced as a set and are recommended for all competition engines.



part number	description	quantity
-------------	-------------	----------

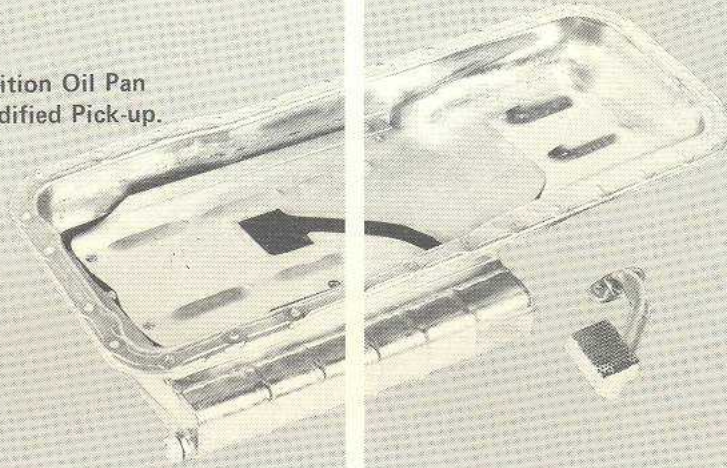
LUBRICATION SYSTEM

15040-73400	Oil Pump/Distributor Drive Spindle	1
15043-73400	Brass Drive Gear	1
15010-A1110	Competition High Pressure Oil Pump, required when using an oil cooler	1
15133-E4620	Inner Oil Pump Spring	1
15133-22010	Outer Oil Pump Spring These springs are used as a set to modify the stock oil pump for increased pressure.	1
21300-E4100	Oil Cooler Kit, includes cooler, adapter, lines and pump	1
99996-E1130	Competition Baffled Oil Pan, 7½ qt. capacity	1

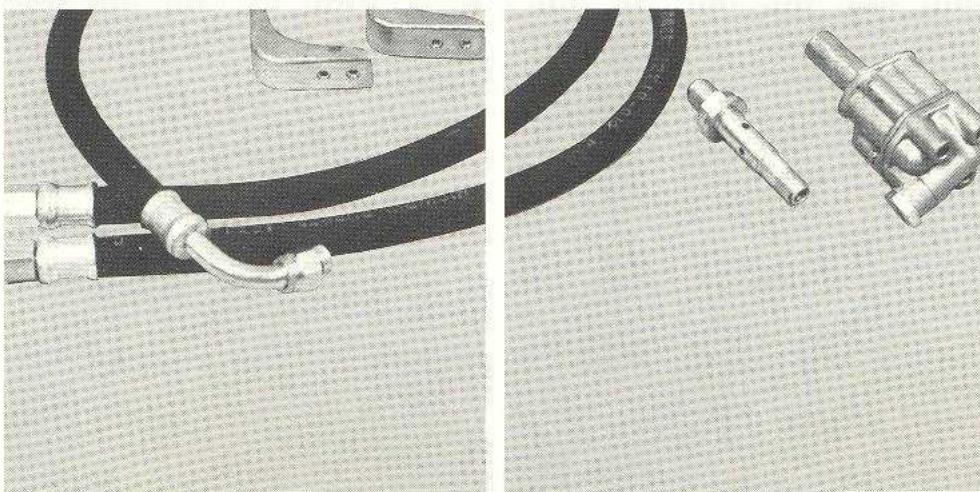
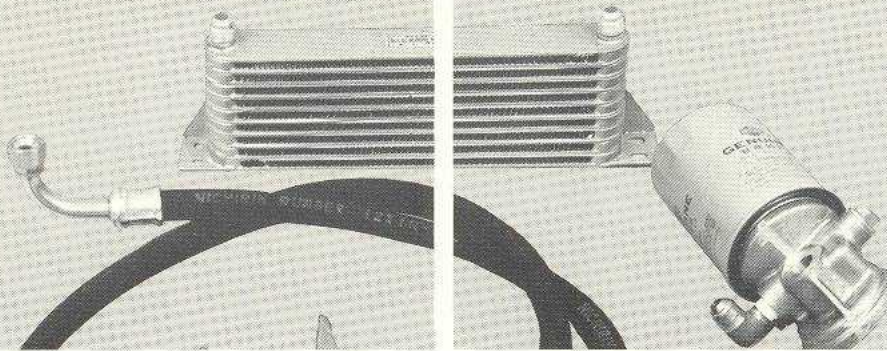


Top: Unground Z Cam Billit
Bottom: Competition Camshaft

Competition Oil Pan
and Modified Pick-up.



Oil Cooler Kit



part number

description

quantity

99996-E1060

PULLEYS

Crankshaft Dampener/Pulley,
partially degreed (used with stock
water pump and alternator pulleys)

1

Crankshaft Pulley,
partially degreed



part number **description** **quantity**

Pulleys continued

The following combination of pulleys must be used as a set, due to the fan belt groove design.

12303-E4620 Crankshaft Pulley with Vibration Dampener 1

21051-E4620 Water Pump Pulley 1

23150-E4620 Alternator Pulley .587" I.D. 1

23150-E4621 Alternator Pulley .667" I.D. 1

99996-E8010 Fan Belt 1

RADIATOR

99996-E4700 Heavy Duty Radiator, works with manual or automatic transmission 1

FUEL SYSTEM

99996-E1020 Triple 44 mm Solex induction System, includes carburetors, manifold, linkage, insulators and fuel tube. (Air cleaners not included) 1

17020-E4100 Electric Fuel Pump 1

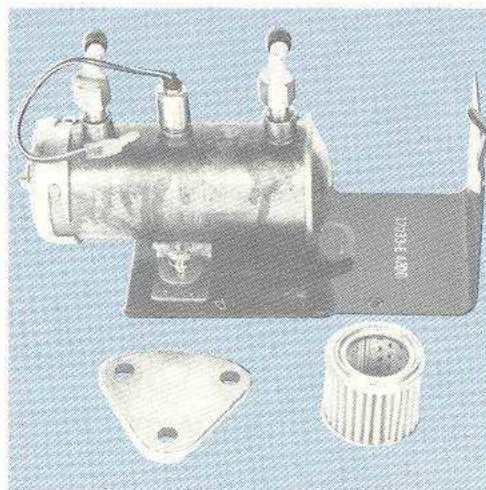
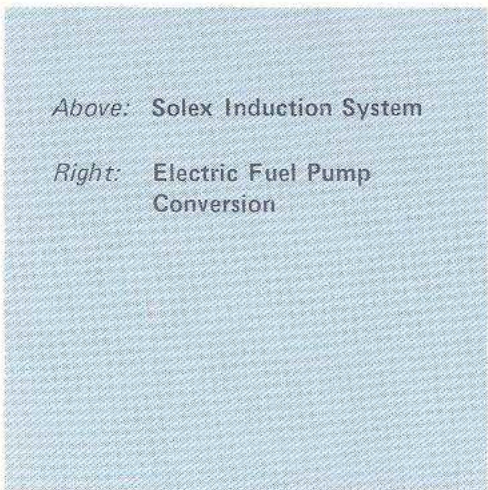
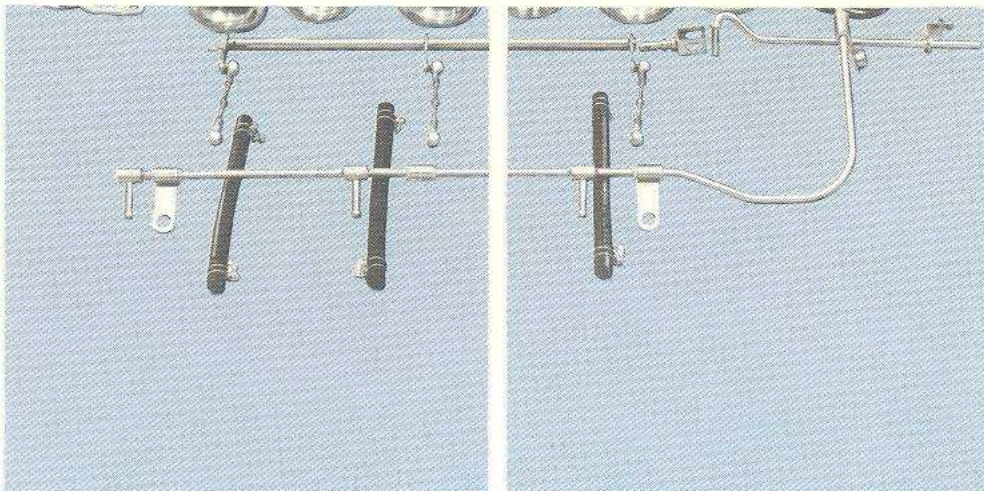
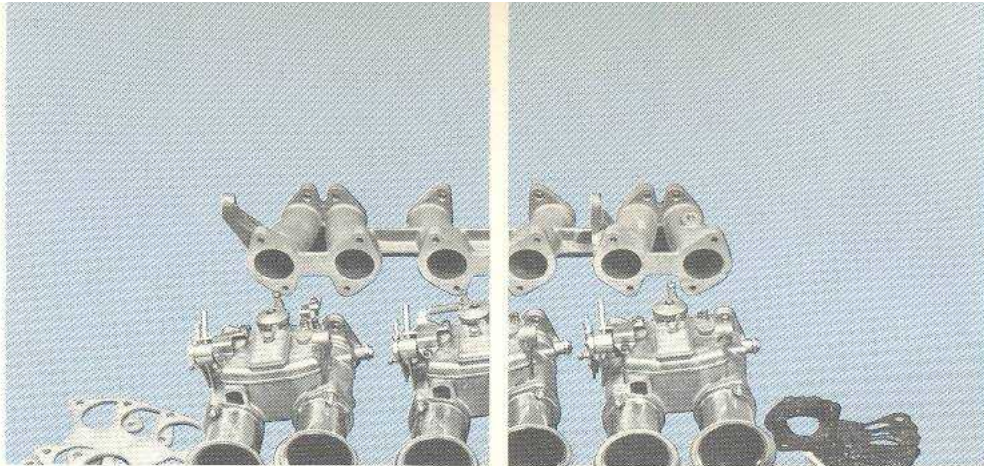
17033-E4200 Electric Fuel Pump Bracket (mounts in existing holes in chassis near fuel tank) 1

16420-E3020 Blanking Plate for Stock Mechanical Pump 1

16404-28520 Replacement Filter for Electric Fuel Pump 1

DISTRIBUTOR

22100-E3101 Distributor, quicker advance curve 1



part number	description	quantity
-------------	-------------	----------

EXHAUST SYSTEM

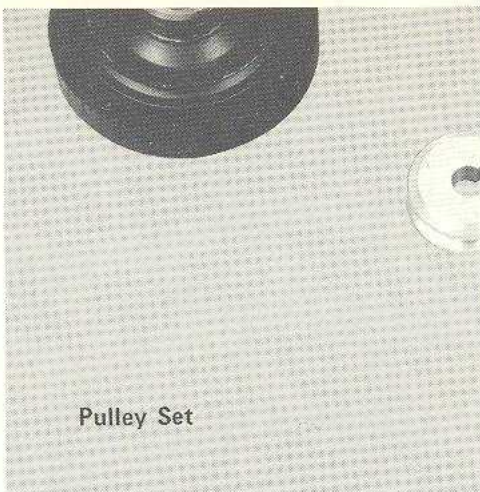
99996-E1045	L24/L26 Exhaust System. Includes headers, pipes, mufflers, exhaust tips. This system will not fit 2+2 models.	1
-------------	---	---

99996-E1042	Megaphone for above Exhaust System	1
-------------	------------------------------------	---

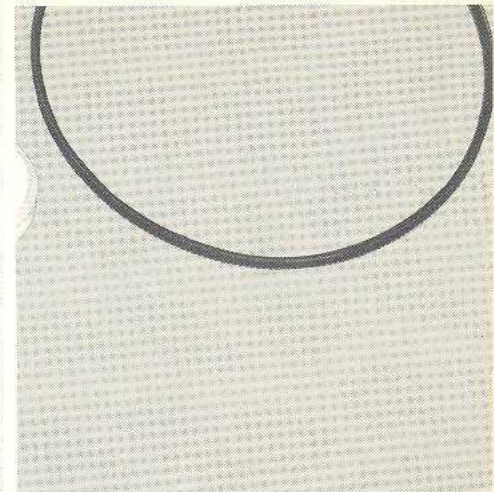
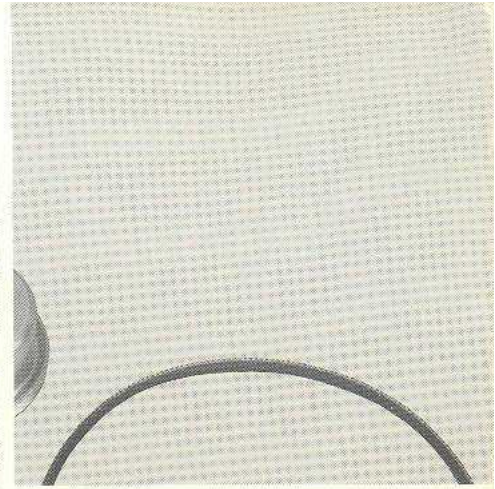
99996-E1140	Competition Header Assembly	1
-------------	-----------------------------	---

99996-E1044	Replacement Manifold Gasket for 99996-E1045	1
-------------	---	---

99996-E1043	Replacement Muffler Assembly for 99996-E1045	1
-------------	--	---



Pulley Set



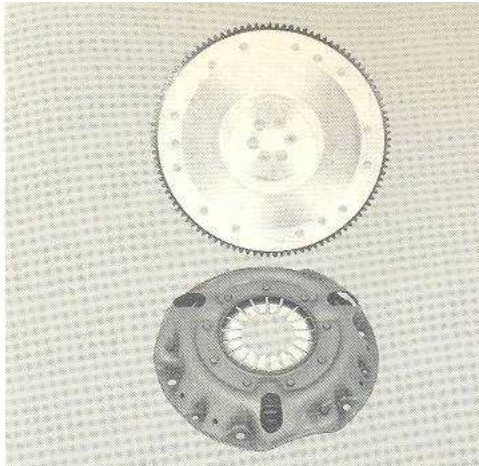
COMPETITION HEADER

The L24/L26 exhaust system is designed so that the rearmost section of the exhaust system which contains the glass pack type mufflers, can be removed easily and the megaphone installed in its place. This provides a straight-through, unmuffled exhaust system.

part number **description** **quantity**

FLYWHEEL AND CLUTCH

99996-F1010	Aluminum Flywheel, 8 lbs.	1
30210-E4621	240/260 Pressure Plate, 800 kg (to 7-73)	1
30100-N4210	Competition Clutch Disc, Compatible with aluminum flywheel	1
99996-E3040	Solid Hub Clutch Disc, for Racing Only. Not compatible with 99996-F1010 flywheel.	1



Left: Aluminum Fly Wheel and Competition Clutch Cover

Early style transmission gear sets listed include gear assemblies, keys, snap rings, and gasket set. These kits will not convert a 4-speed to a 5-speed transmission, also they cannot be used in Warner type transmissions.

DRIVE TRAIN

32010-E8752-A	Competition 5-Speed Transmission, late type (used with stock driveshaft)	1
---------------	--	---

Competition 5-Speed Gear Ratios

1st	2.348
2nd	1.601
3rd	1.296
4th	1.138
5th	1.000
Rev.	3.382

32010-E8752	5-Speed Transmission, late type (stock ratios)	1
-------------	--	---

99996-J3101	Optional Late 5-Speed Ratio Set	1
-------------	---------------------------------	---

	Stock	Optional
1st	2.906	3.321
2nd	1.902	2.077
3rd	1.308	1.308
4th	1.000	1.000
5th	0.864	0.864
Rev.	3.382	3.382

part number **description** **quantity**

37000-E4100	Driveshaft for use with 32010-E8752 5-speed (cars manufactured to 8/71)	1
37000-E8710	Driveshaft for use with 32010-E8752 5-Speed (cars manufactured from 9/71)	1
99996-E3030	5-Speed Shifter Kit, required on cars manufactured to 8/71. (Cars built from 9/71 use stock 4-speed linkage)	1
32865-E4100	Gear Shift Knob w/5-speed pattern (included in 99996-E3030 kit)	1

Early type 5-Speed Transmission Gear Sets.
(cannot be used in late type 5-speed)

99996-J3020	Stock Ratio	1
99996-J3010	Option 1, Middle Close Gear Set	1
NMCRK-32011	Option 2, Ultra Close Gear Set	1

Early 5-Speed Gear Sets

	Stock	Option 1	Option 2
1st	2.957	2.678	1.858
2nd	1.858	1.704	1.388
3rd	1.311	1.262	1.217
4th	1.000	1.000	1.000
5th	0.852	0.852	0.852
Rev.	2.922	2.922	2.922

part number description quantity

DIFFERENTIALS

240-Z

38300-E4310	3.9 Differential, with Limited-slip (R180).	1
38300-E4100	4.1 Differential, without Limited-slip (R180)	1
38300-A0200	4.4 Differential, with Limited-slip (R190)	1

All 280 and 260 2+2 Manual

38300-N3515	3.9 Differential with limited-slip(R200)	1
38300-N3615	4.111 Differential with limited-slip (R200)	1
38300-N3715	4.375 Differential with limited-slip (R200)	1
38300-N3815	4.625 Differential with limited slip (R200)	1
38300-N3915	4.875 Differential with limited slip (R200)	1
38300-N4015	5.143 Differential with limited slip (R200)	1

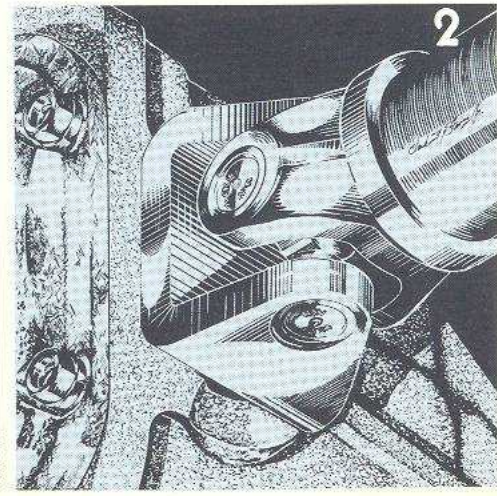
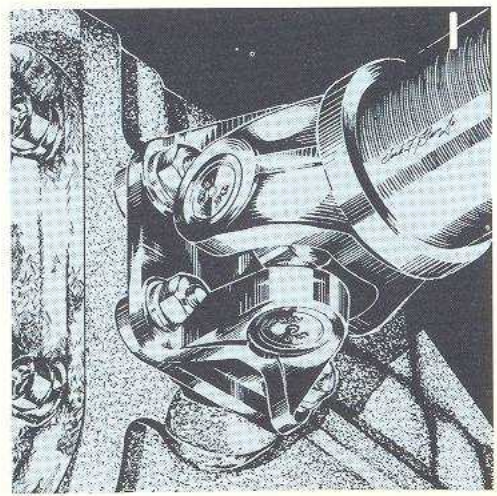
There are three different sizes of differentials available for the 240/260/280 series. The R180 type is the standard unit on all 240/260 models (except the 260 2+2 with manual transmission). The R190 is an optional heavy duty unit, and finally, the R200 is standard on all 280's and 260 2+2's with manual transmission. The R180 and R190 are interchangeable as complete units while the R200 will only fit the models indicated. All units listed here (except those indicated) are equipped with a clutch type limited slip unit.



R190 Differential



R180 Differential



part number description quantity

260 and 260 2+2 Automatic

38300-U3400	4.111 Differential without limited slip (R180)	1
-------------	--	---

All competition differentials are flange type (illustration No. 1), with the exception of 38300-U3400. If your Z is equipped with a non-flange type (illustration No. 2) you will need a set of flange type half shafts, part No. 39600-N4251, to complete the installation of your differential.

part number **description** **quantity**

R180 Differentials

38420-E4610	Limited Slip Assembly, 2 pinion (R180)	1
38420-E8700	Limited Slip Assembly, 4 pinion (R180)	1
38102-E4610	Ring Gear Bolt (R180) required when installing limited slip assembly.	8
38427-E4610	Pinion Shaft, (2 pinion type)	1
38427-E8700	Pinion Shaft (4 pinion type)	1
38431-E4610	Pressure Ring (2 pinion type)	2
38431-E8700	Pressure Ring (4 pinion type)	2
38434-E4610	Disc, Flat (with ears)	4
38433-E4610	Disc, Flat (without ears)	4
38434-E4610	Differential Case Screw	4
38435-E4610	Disc, Curved (with ears)	2
38436-E4610	Disc, Curved (without ears)	2

R190 Differentials

38420-A0220	Limited Slip Assembly, 2 pinion (R190)	1
38420-R1110	Limited Slip Assembly, 4 pinion (R190)	1
38102-68210	Ring Gear Bolt (R190), required when installing limited slip assembly.	8
38427-A0200	Pinion Shaft	1
38431-68210	Pressure Ring	2
38432-68210	Disc, Flat (with ears)	2
38433-68210	Disc, Flat (without ears)	2
08320-61210	Differential Case Screw	4

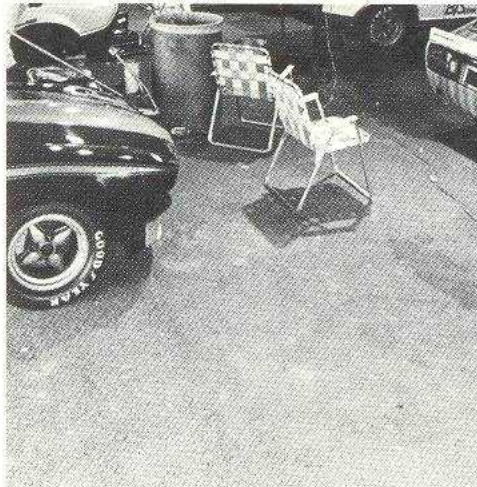
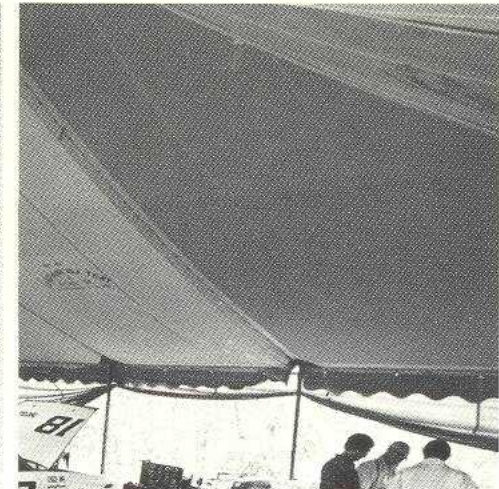
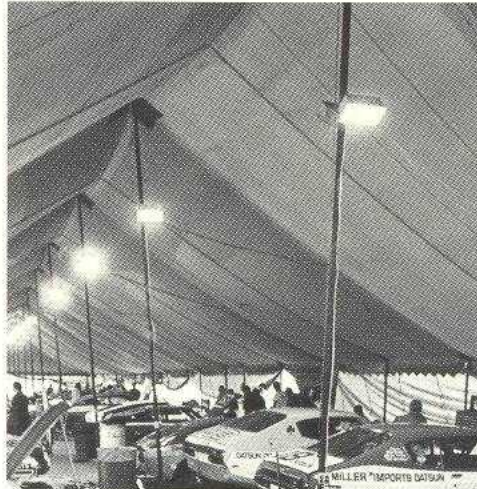
part number **description** **quantity**

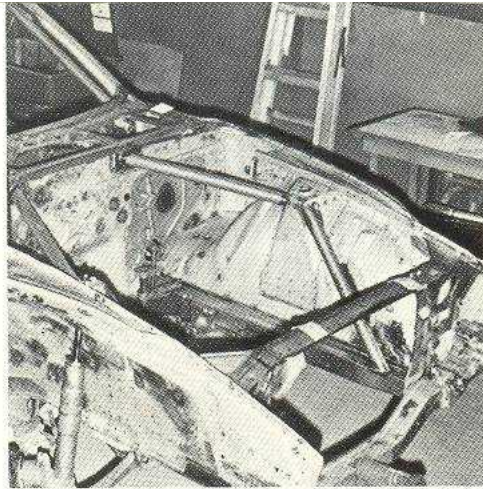
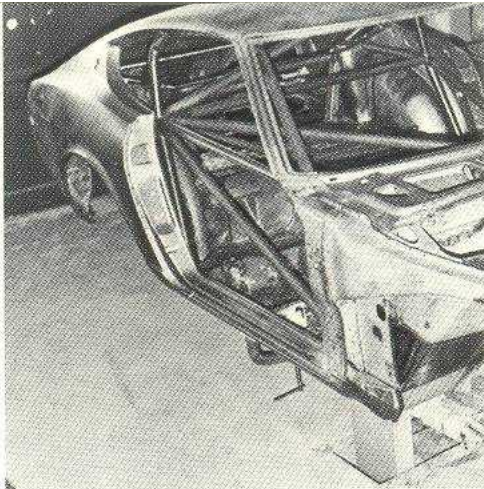
38432-A0200	Disc, Curved (with ears)	2
38433-A0200	Disc, Curved (without ears)	2

The Competition Department also maintains a complete inventory of bearings and seals for the R190 differential.

R200 Differential

38420-N3201	Limited Slip Assembly, 4 pinion (R200)	1
-------------	--	---



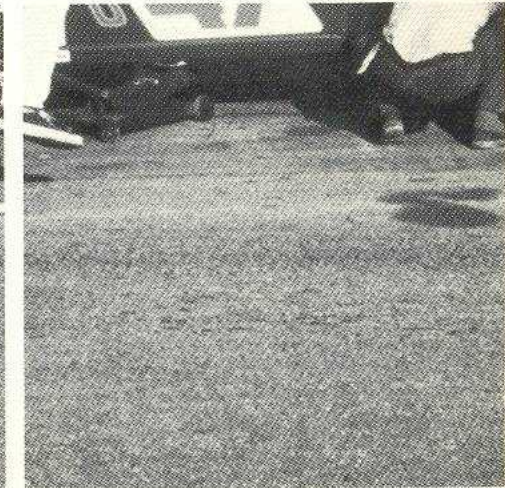
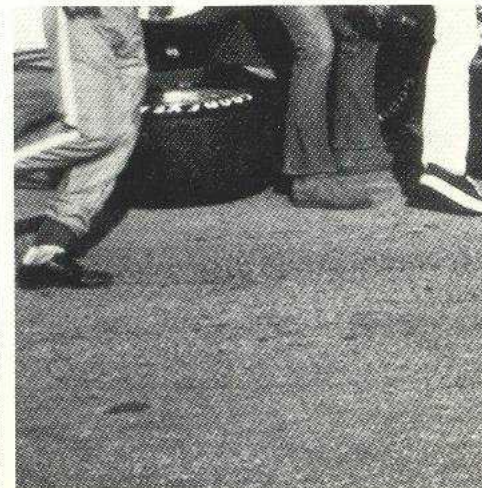


part number	description	quantity
-------------	-------------	----------

	DIFFERENTIAL OIL COOLER	
38501-E8775	Oil Cooler	1
38503-E8775	Electric Oil Pump	1

part number	description	quantity
-------------	-------------	----------

	RING & PINION SETS	
38100-78600	3.700 Ring & Pinion (R180)	1
38100-78500	3.900 Ring & Pinion (R180)	1
38100-E4100	4.111 Ring & Pinion (R180)	1
38100-E4105	4.375 Ring & Pinion (R180)	1
38100-E4300	4.625 Ring & Pinion (R180)	1
38100-E4400	4.875 Ring & Pinion (R180)	1
38100-E4500	5.143 Ring & Pinion (R180)	1
38100-A0150	3.9 Ring & Pinion (R190)	1
38100-A0250	4.4 Ring & Pinion (R190)	1
38100-N3405	3.154 Ring & Pinion (R200)	1
38100-N3105	3.7 Ring & Pinion (R200)	1
38100-N3505	3.9 Ring & Pinion (R200)	1
38100-N3605	4.111 Ring & Pinion (R200)	1
38100-N3705	4.375 Ring & Pinion (R200)	1
38100-N3805	4.625 Ring & Pinion (R200)	1
38100-N3905	4.875 Ring & Pinion (R200)	1
38100-N4005	5.143 Ring & Pinion (R200)	1



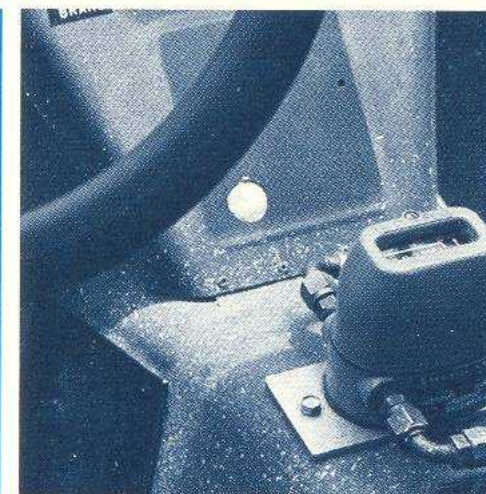
part number	description	quantity
-------------	-------------	----------

Speedometer Pinion Available for
4-Speed (to 8/71) and all 5-Speeds

32703-78100	Speedometer Pinion 16T Yellow Gear Ratio 3.364	1
32703-78101	Speedometer Pinion 17T Black Gear Ratio 3.545	1
32703-78102	Speedometer Pinion 18T Blue Gear Ratio 3.700	1
32703-78103	Speedometer Pinion 19T White Gear Ratio 3.900	1
32703-78104	Speedometer Pinion 20T Red Gear Ratio 4.111	1
32703-86401	Speedometer Pinion 21T Purple Gear Ratio 4.375	1
32703-86402	Speedometer Pinion 22T Orange Gear Ratio 4.625	1
32703-86403	Speedometer Pinion 23T Green Gear Ratio 4.875	1
32707-66300	Speedometer Sleeve Assy. Applicable to pinions whose number of teeth is 20 to 23.	1



When installing a different ring and pinion ratio, you will find it necessary to correct your speedometer with one of the appropriate speedometer pinion gears listed. The 5-Speed transmission (32010-E8752) comes equipped with a 19 tooth (3.9 differential ratio) speedometer pinion gear.



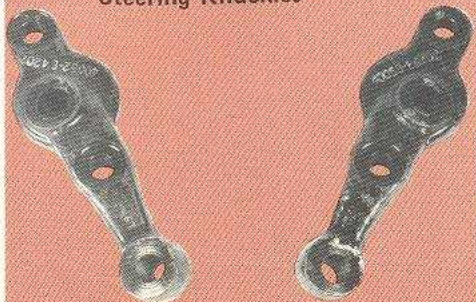
Speedometer Pinions Available for
4-Speed Transmissions manufactured
from 9/71.

32703-P2616	Speedometer Pinion 16T Yellow Gear Ratio 3.364	1
32703-P2617	Speedometer Pinion 17T Black Gear Ratio 3.545	1
32703-P2618	Speedometer Pinion 18T Blue Gear Ratio 3.700	1
32703-P2619	Speedometer Pinion 19T White Gear Ratio 3.900	1
32703-P2620	Speedometer Pinion 20T Red Gear Ratio 4.111	1

part number	description	quantity
-------------	-------------	----------

32703-P2621	Speedometer Pinion 21T Purple Gear Ratio 4.375	1
32703-P2622	Speedometer Pinion 22T Orange Gear Ratio 4.625	1
32703-P2633	Speedometer Pinion 23T Green Gear Ratio 4.875	1
32707-66300	Speedometer Sleeve Assy. Applicable to pinions whose number of teeth is 20 to 23.	1

Steering Knuckles



Steering Rack Bushing

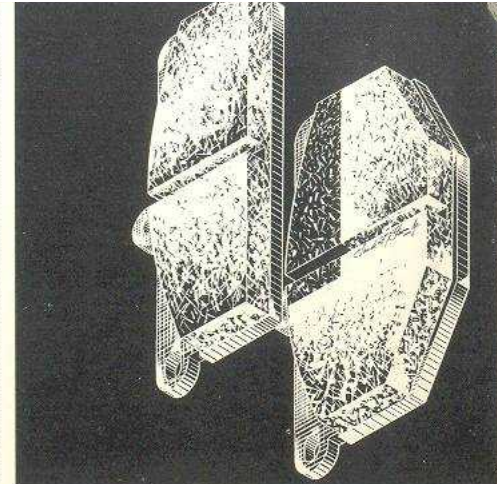


Brake pads for the FIA calipers are available in two different types. The full size pad is for use on all Z car applications, while the short pad is to be used when the FIA kit is adapted for use on sedans. Calipers come with full length pads.

Available Lining Compounds:

- M33 — Soft
- M59 — Medium
- M28 — Hard
- DS11 — Ferodo racing compound

FIA Brake Calipers are a 4-Piston caliper with approximately twice the pad area of stock units.



The Competition Steering Knuckles are 10 mm shorter than stock and will noticeably quicken the steering. Suspension settings should be checked after installation of knuckles. Only applicable on vehicles from 7/70 to 7/73.



part number	description	quantity
-------------	-------------	----------

BRAKES

FIA Brake System

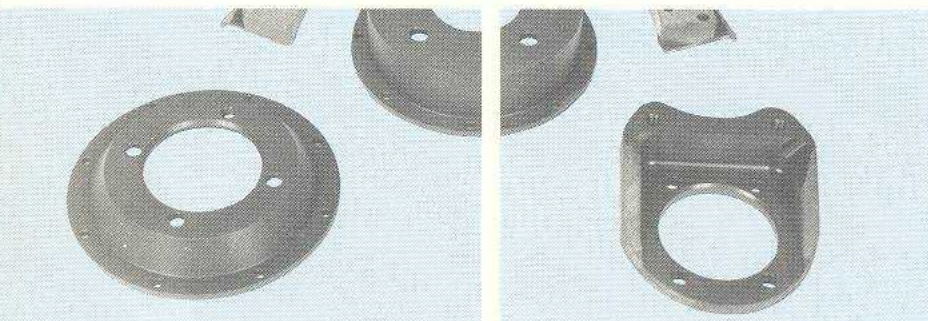
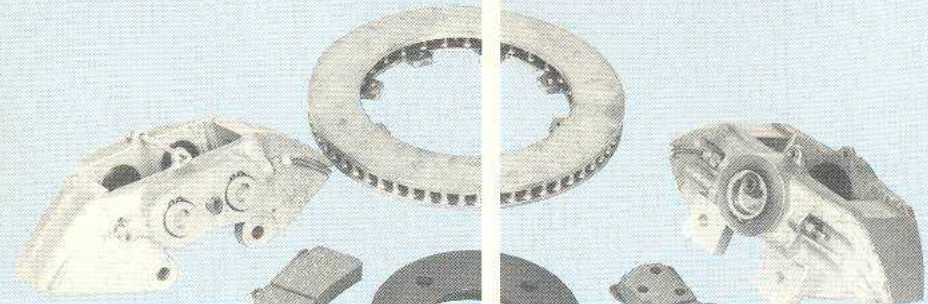
41000-E7201	Brake Caliper (R)	1
41010-E7201	Brake Caliper (L)	1
99996-E7050	Installation Kit for FIA Brake Calipers (Contains Hoses, Bolts, Washers and Connectors)	1
41060-F0225	M33 Compound, full length pad (set of four)	1
41060-E7201	M59 Compound, full length pad	4
41060-R1120	M28 Compound, full length pad	4
41060-E7202	DS11 Compound, full length pad	4
41060-E4621	M59 Compound, short pad	4
41060-E4622	M28 Compound, short pad	4
44060-E7200	"Green Stuff" Brake Shoe (primary)	2
44070-E7200	"Green Stuff" Brake Shoe (secondary)	2
99996-E7010	DS11 Brake Pad Set for stock brake calipers	1
44100-E7200	13/16" Wheel Cylinder (R)	1
44101-E7200	13/16" Wheel Cylinder (L)	1

part number	description	quantity
-------------	-------------	----------

STEERING COMPONENTS

40052-E4202	Steering Knuckle (R)	1
40053-E4202	Steering Knuckle (L)	1
<i>The above two parts must be used as a set.</i>		
54444-78500	Steering Rack Bushing (R)	1
54445-78500	Steering Rack Bushing (L)	1

The steering rack bushings must be used as a set, and will fit vehicles up to 7/73.



Z-Car Disc Brake Set-up

part number	description	quantity
99996-E7105	Rear Caliper	2
99996-E7110	Rear Caliper Bracket	2
99996-E7120	Rotor	4
99996-E7130	Rotor Hardware Kit	4
99996-E7140	Rear Brake Assy. Hardware Kit	2

All of the above parts must be used as a set to make up the four wheel disc brake system. Limited supply, race only.

99996-E7150	Front Caliper Seal Kit	1
99996-E7160	Rear Caliper Seal Kit	1
SUSPENSION		
Factory Racing Suspension Kit (Hydraulic)		
54010-E7211	Front Spring, 198 mm	2
54302-E7213	Strut (RF)	1
54303-E7213	Strut (LF)	1

part number	description	quantity
Four Wheel Disc Brake System		
99996-E7000	Hat Section (Front)	2
99996-E7005	Caliper (RF)	1
99996-E7006	Caliper (LF)	1
99996-E7014	Brake Pad (front)	4
99996-E7012	Brake Pad (rear)	4
99996-E7100	Hat Section (rear)	2

54050-E7210	Suspension Rebound Bumper	4
55020-E7211	Rear Spring, 236 mm	2
55302-E7213	Strut (RR)	1
55303-E7213	Strut (L.R.)	1
99996-E4060	42 mm Rear Strut Spacer (260 2+2 and all 280's)	2
<p>The factory suspension kit lowers the car approximately 2 inches. The factory racing springs must be used only with the factory racing struts.</p>		
40209-A0220	Wheel Spacer thickness 5 mm	4

part number

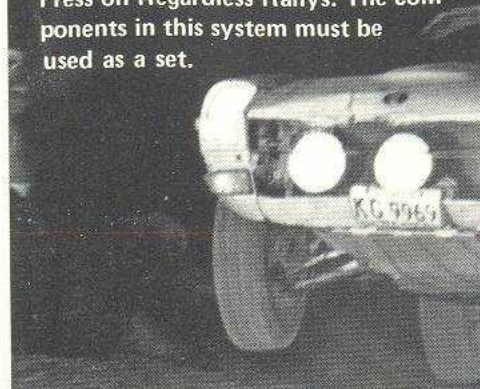
description

quantity

Factory Adjustable Racing Suspension (Gas-Filled)		
54010-E4621	Front Spring, 171.5 mm	2
54302-E4621	Strut (RF)	1
54303-E4621	Strut (LF)	1
55020-E4621	Rear Spring, 205 mm	2
55302-E4621	Strut (RR)	1
55303-E4621	Strut (LR)	1
99996-E4060	42 mm Rear Strut Spacer (260 2+2 and all 280's)	2

The Rally Suspension Kit will increase the ground clearance approximately 1½". This is the factory set-up used in the Press on Regardless Rallys. The components in this system must be used as a set.

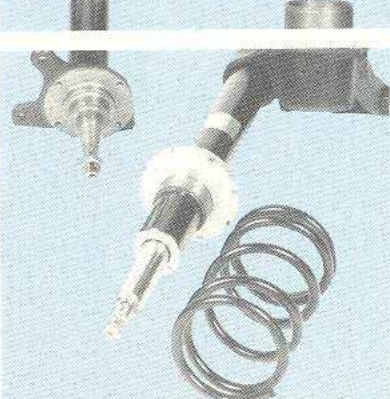
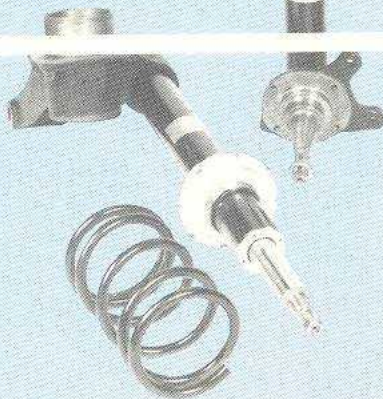
ground clearance approximately 1½". This is the factory set-up used in the East African, Monte Carlo and



Factory Adjustable Suspension Kit



The Gas Filled Suspension System is designed to have a completely adjustable ride-height capability. The lower spring seat on each of the struts can be moved up or down as needed on a threaded collar attached to the strut tube. This allows the ride-height of the car to be simply and quickly adjusted for any track condition. The components in this system must be used as a set.

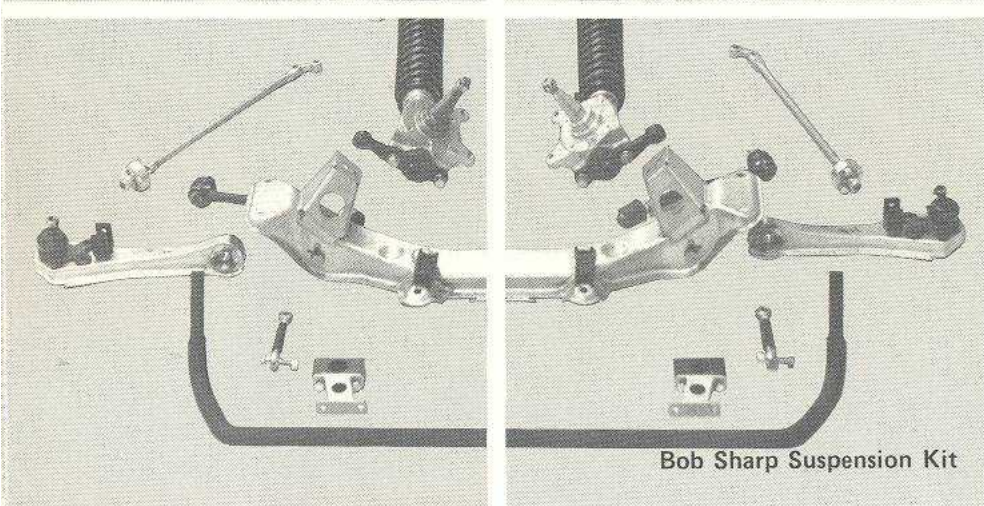
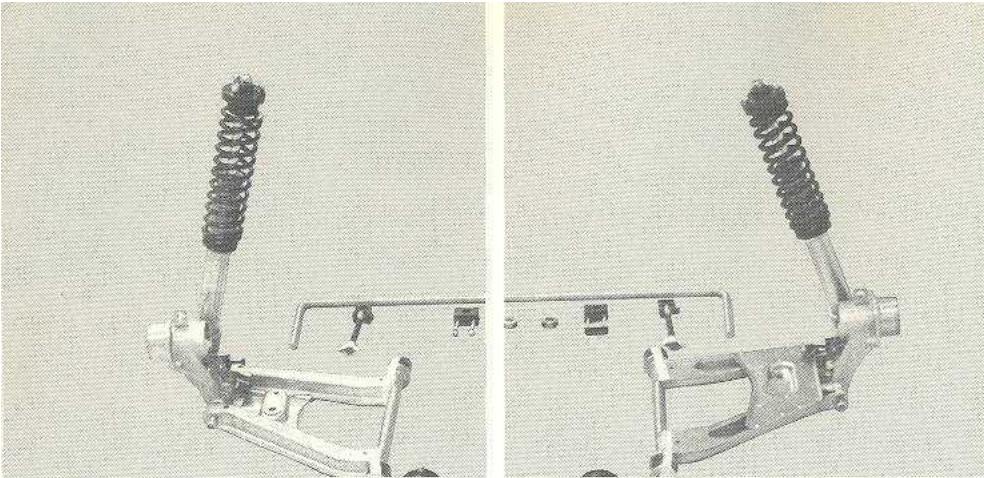


part number

description

quantity

Factory Rally Suspension Kit (Gas-Filled)		
54010-E7220	Front Springs, 266 mm	2
54302-E7220	Strut (RF)	1
54303-E7220	Strut (LF)	1
55020-E7220	Rear Spring, 306 mm	2
55302-E7220	Strut (RR)	1
55303-E7220	Strut (LR)	1
99996-E4060	42 mm Rear Strut Spacer (260 2+2 and all 280's)	2



Bob Sharp Suspension Kit

part number description quantity

99996-E4100 **Bob Sharp Suspension Kit** 1
The Bob Sharp Suspension Kit includes all pieces necessary to duplicate the suspension on Bob Sharp's Championship C Production Car. Kit includes springs, struts, sway bars, etc.

STABILIZER BARS

54611-E7210 22 mm Front Stabilizer Bar 1

54617-E7210 Bushing for 22 mm Front Stabilizer Bar 2

55611-E4200 19 mm Rear Stabilizer Bar 1

54613-66000 Bushing for 19 mm Rear Stabilizer Bar 2

55611-E7210 23 mm Rear Stabilizer Bar 1

55613-E7210 Bushing for 23 mm Rear Stabilizer Bar 2

55611-E4622 25 mm Rear Stabilizer Bar 1

55613-E4622 Bushing for 25 mm Rear Stabilizer Bar 2

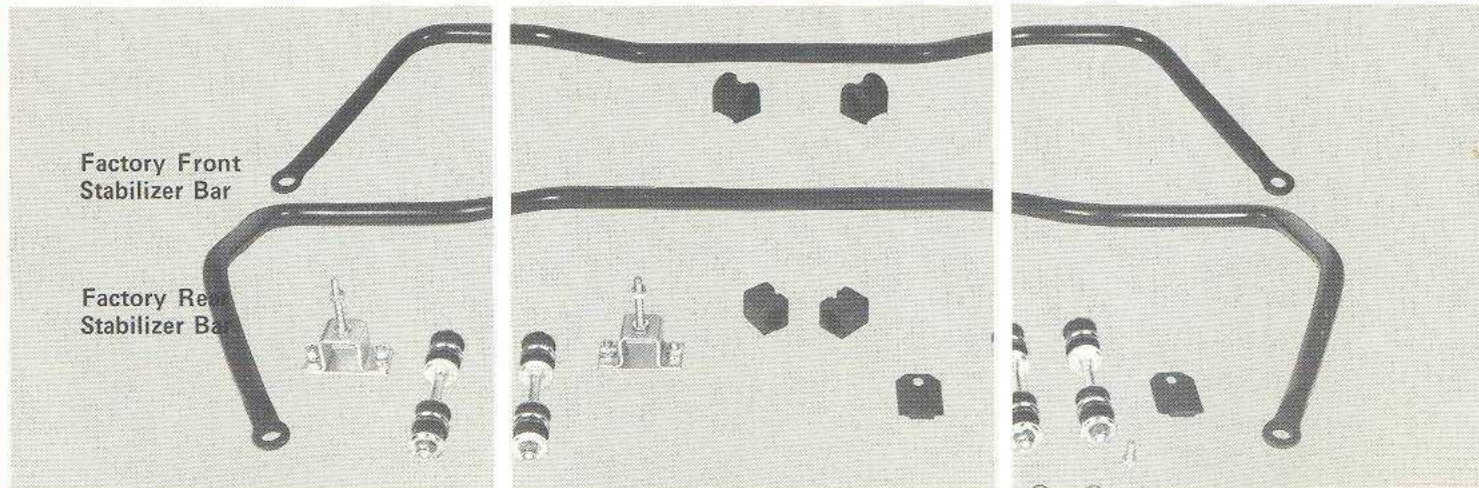
99996-E4010 Rear Stabilizer Bar Installation Kit for 70/72 models. 1

99996-E4020 Rear Stabilizer Bar Installation Kit for 1973 models 1

Installation Kit not required on 1974 cars.

Competition Rear Sway Bars will not fit on cars manufactured after 9-74.

The 23mm Rear Stabilizer Bar is only recommended for use with the 22mm Front Stabilizer Bar; however, in situations where a lot of oversteer is desired, such as Autocross or Slalom events, the 25mm rear bar can be used with the 22mm front bar. For normal driving where the stock 17mm front bar is retained, we recommend installing the 19mm rear stabilizer bar. Any of the stabilizer bars listed can be used with all suspension systems listed except the Bob Sharp Kit. (The 200-Z comes with the 18mm rear bar as standard equipment.)



Factory Front Stabilizer Bar

Factory Rear Stabilizer Bar

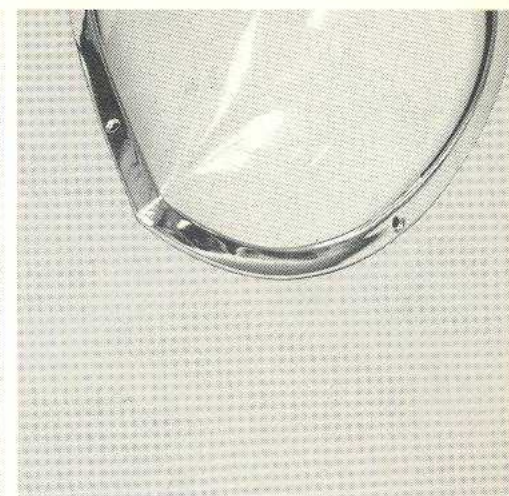
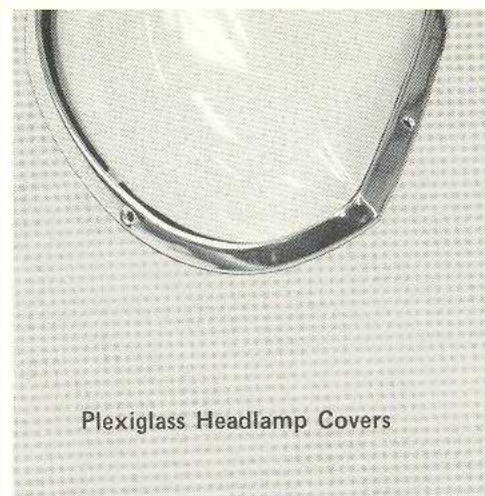
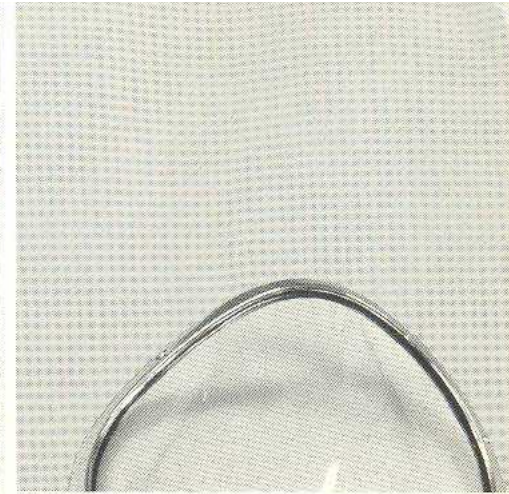
part number

description

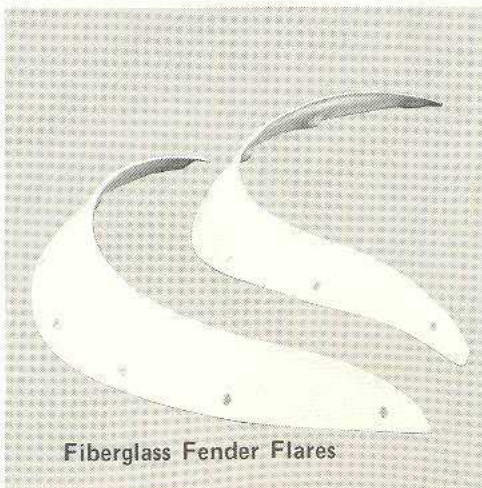
quantity

REPLACEMENT BODY PANELS

63910-E7200	Fiberglass Fender Flare RF (Race)	1
63911-E7200	Fiberglass Fender Flare LF (Race)	1
78910-E7200	Fiberglass Fender Flare RR (Race)	1
78911-E7200	Fiberglass Fender Flare LR (Race)	1
63910-E8700	Fiberglass Fender Flare RF (Street)	1
63911-E8700	Fiberglass Fender Flare LF (Street)	1
78910-E8700	Fiberglass Fender Flare RR (Street)	1
78911-E8700	Fiberglass Fender Flare LR (Street)	1
80100-E7275	Fiberglass Door, right	1
80101-E7275	Fiberglass Door, left	1
90100-E7275	Fiberglass Tail Gate	1
63900-E4126	Plexiglass Lens Cover R	1
63901-E4126	Plexiglass Lens Cover L	1



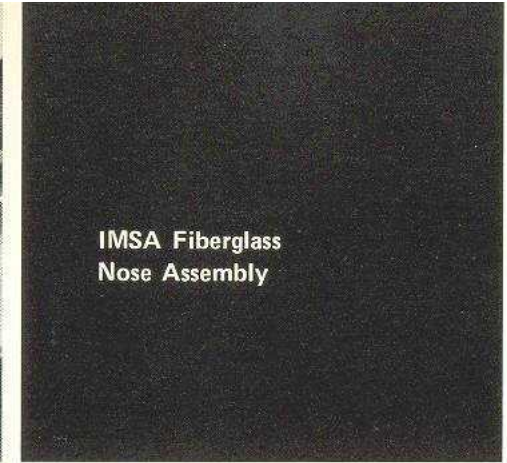
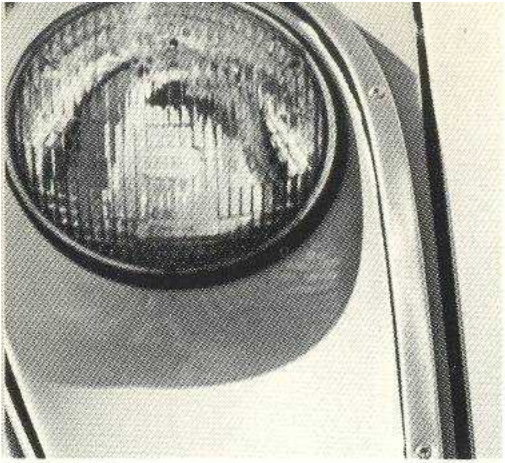
Plexiglass Headlamp Covers



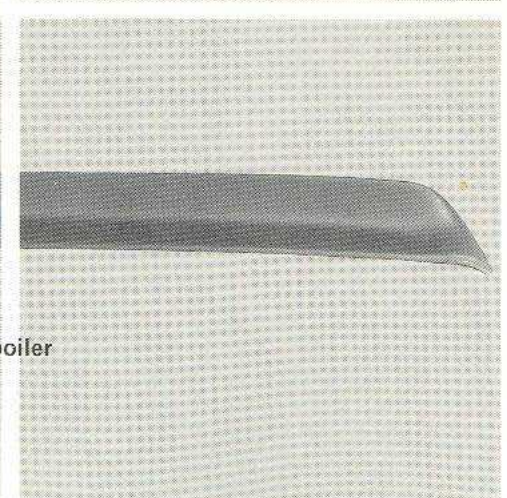
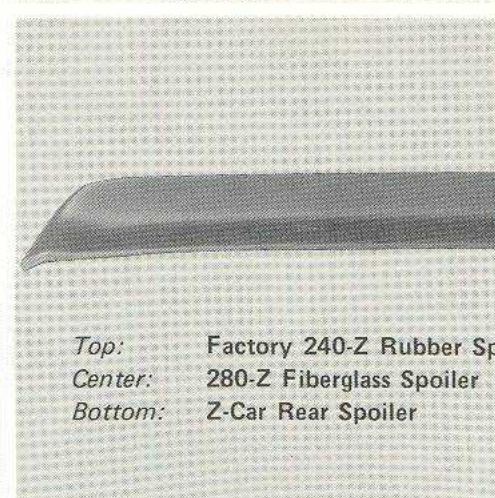
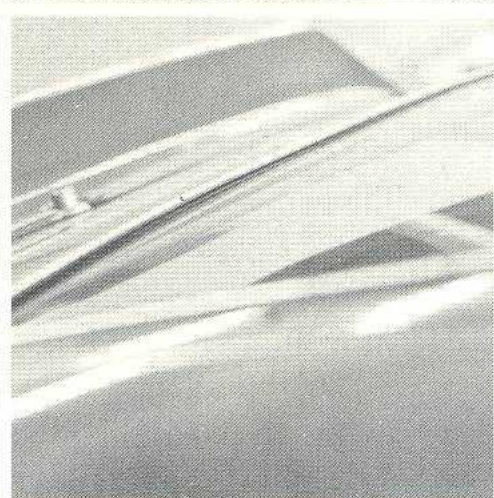
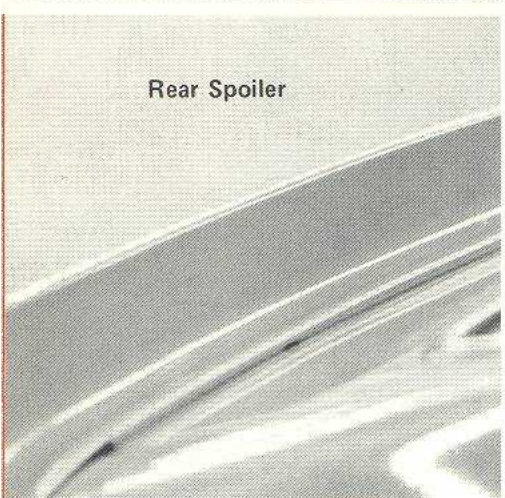
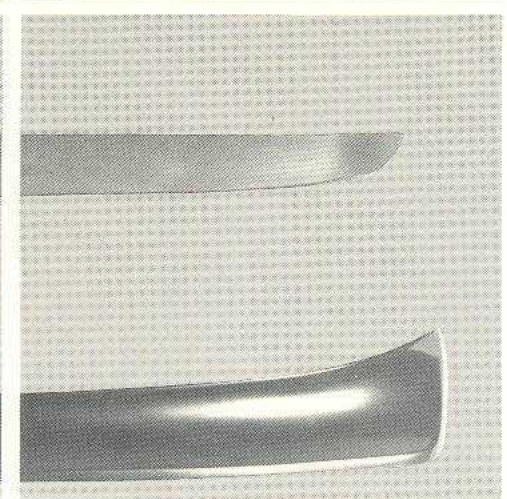
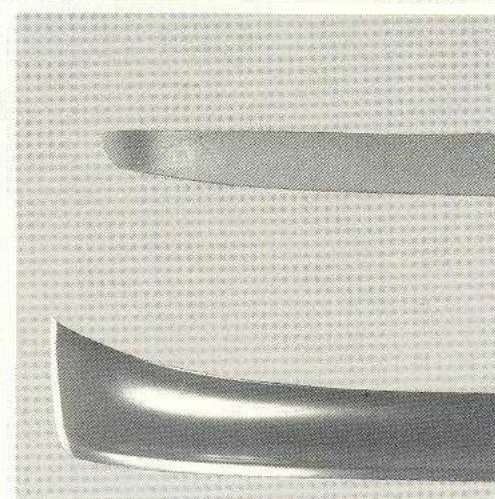
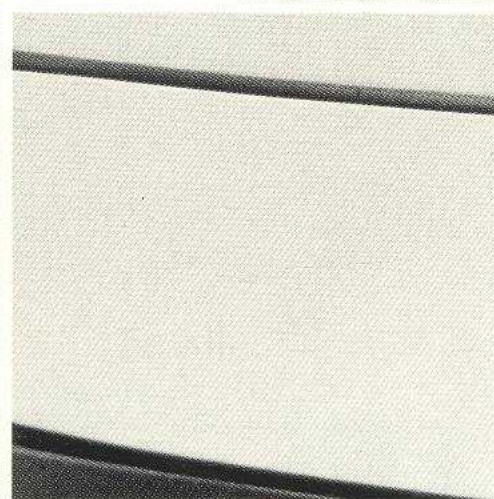
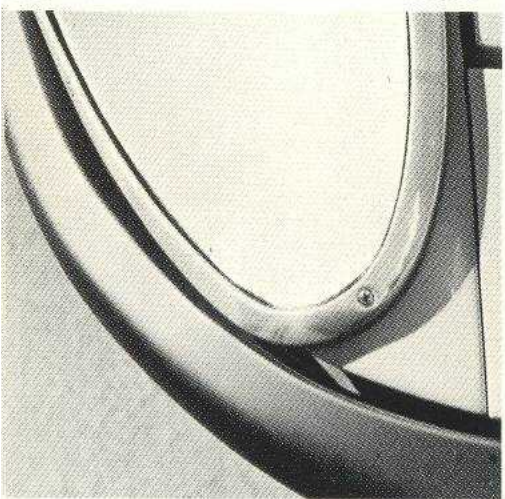
Fiberglass Fender Flares

These bolt-on Fender Flares are designed and built by the Factory for FIA racing and rallying.

Headlamp covers are made of clear plexiglass and secured by a chrome retaining ring. The use of headlamp covers is illegal in most areas. Check local laws before ordering.

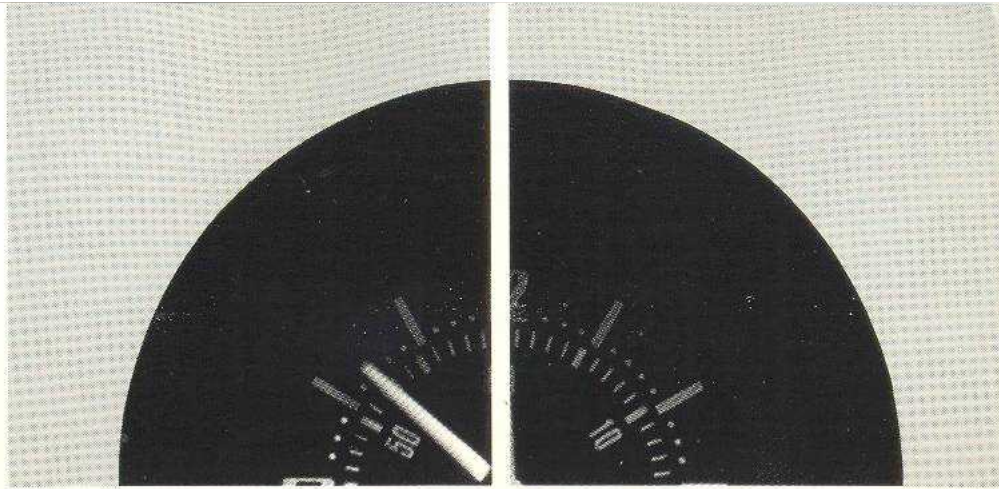
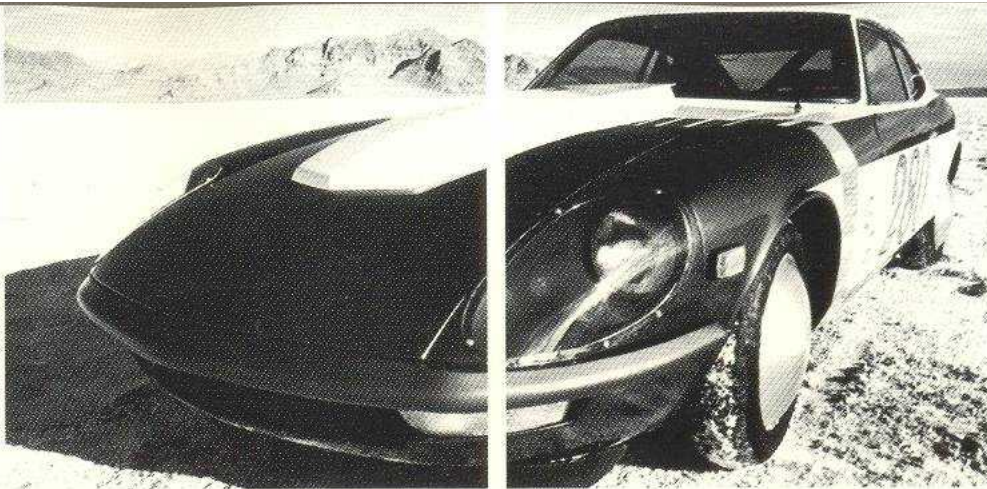


IMSA Fiberglass
Nose Assembly



Rear Spoiler

Top: Factory 240-Z Rubber Spoiler
Center: 280-Z Fiberglass Spoiler
Bottom: Z-Car Rear Spoiler



part number	description	quantity
-------------	-------------	----------

98300-E8100	Factory Front Rubber Spoiler (for vehicles manufactured to 8/74)	1
-------------	--	---

99996-N6000	Fiberglass Front Spoiler, without ducts (for vehicles manufactured from 9/74)	1
-------------	---	---

98100-N3300	Rear Spoiler	1
-------------	--------------	---

99996-E6000	3 piece IMSA Rear Spoiler (not legal for SCCA)	1
-------------	--	---

74810-E4100	Front Splash Pan (for vehicles manufactured to 8/74). Covers area from lower front body panel to front cross-member, promotes better cooling. Standard equipment on '73 240-Z and '74 260-Z.	1
-------------	--	---

IMSA Style Fiberglass Nose Assembly		
99996-GNOSE	Complete Kit with Lens Covers	1

This fiberglass nose extension is necessary to convert a 'Z' front end to an IMSA style ZG.

MISCELLANEOUS

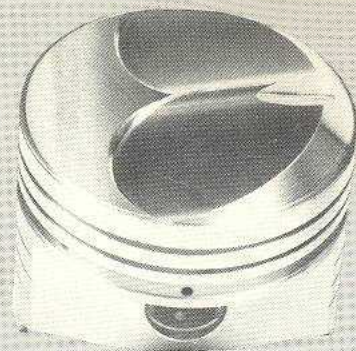
27385-E4100	Combination Clock/Stop Watch Assembly (for vehicles manufactured up to 7/73) Fits in place of stock clock.	1
-------------	---	---

Stop Watch/Clock Assembly

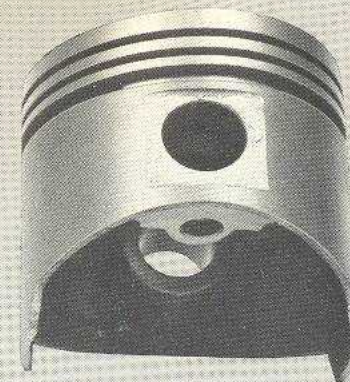


518

All Forged Pistons have an approximately 11.5 to 1 compression ratio and all require cylinder head modifications. The L16 and L18 forged pistons are designed to be used with the L16 Stock Rods; the L20B forged piston is used with the stock L20B rod.



Forged



Cast

part number	description	quantity
-------------	-------------	----------

FORGED PISTONS

99996-D1061	L16 Forged Piston, .040 with Pin and Spirlox	4
-------------	--	---

99996-D1066	L18 Forged Piston, .040 with Pin and Spirlox	4
-------------	--	---

99996-D1141	L20B Forged Piston, Std. bore with Pin and Spirlox	4
-------------	--	---

99996-K1010	L20B Forged Piston, .040 with Pin and Spirlox	4
-------------	---	---

99996-D1071	L16 Ring Set for Forged Piston	1
-------------	--------------------------------	---

99996-D1077	L18 and L20B (.040) Ring Set for Forged Piston	1
-------------	--	---

99996-D1151	L20B Ring Set Std. Bore for Forged Piston	1
-------------	---	---

99996-M1025	Spirlox for all Forged Pistons	8
-------------	--------------------------------	---

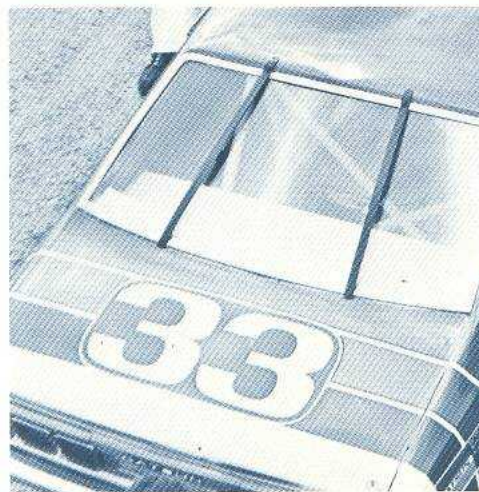
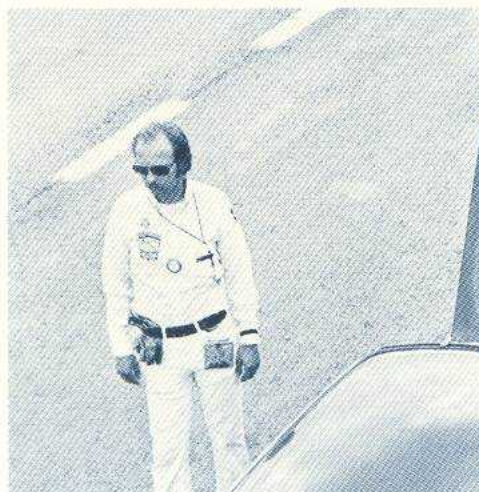
CAST PISTONS

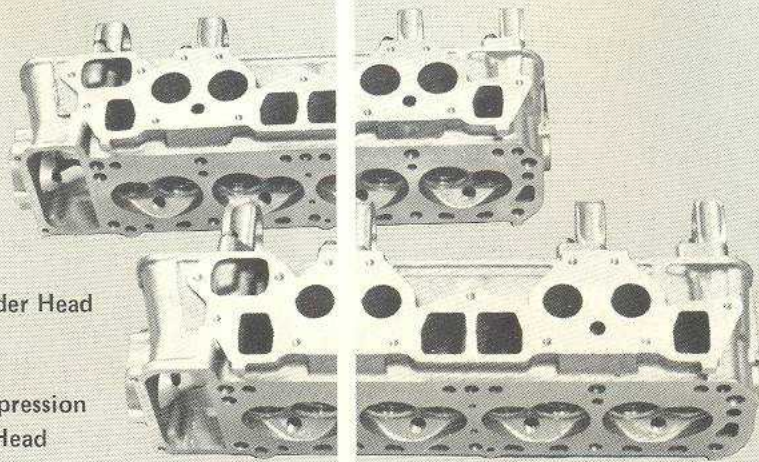
12010-22001	L16 Cast Piston, Std. Bore, with Pin	4 <i>688</i>
-------------	--------------------------------------	--------------

12010-A8720	L18 Cast Piston, Std. Bore, with Pin	4 <i>99.90</i>
-------------	--------------------------------------	----------------

12033-A3500	L16 Ring Set for Cast Piston	1
-------------	------------------------------	---

12033-A8775	L18 Ring Set for Cast Piston	1 <i>24.50</i>
-------------	------------------------------	----------------





SSS Cylinder Head

High Compression
Cylinder Head

part number	description	quantity
-------------	-------------	----------

CYLINDER HEAD		
11041-U0602SV	High Compression Cylinder Head .125" intake ports, 1.65" intake valves, 1.378" exhaust valves. (Fits L16, L18 or L20B engines)	1
11041-U0600-A	SSS Cylinder Head, 1.50" intake ports, 1.65" intake valves, 1.378" exhaust valves. (Fits L16, L18 or L20B engines)	1 11041

part number	description	quantity
-------------	-------------	----------

CONNECTING RODS		
12100-N0102	L16 Connecting Rod (stock)	4
12100-A8703	L18 Connecting Rod (stock)	4
12111-22010	Rod Bearings, approximately .001" thinner for increased oil clearance.	8
99996-D1090	Main Bearing Set, approximately .001" thinner for increased oil clearance	1

ENGINE

99996-D1000	L18 Full Race Engine	1
11010-U0600SV	L18 Bare Block	1

CRANKSHAFT

12200-22010	L16 fully counterweighted, 6 bolt racing crankshaft	1 1150
12201-A8701SV	L18 Crankshaft (stock/5 bolt pattern)	1
12200-A8721	L18 fully counterweighted, 6 bolt racing crankshaft	1 175.00
12279-22010	Rear Oil Seal	1
13042-22010	Front Oil Seal	1

HEAD GASKET

11044-U0820	L18/L20B Competition Head Gasket (diameter 87mm, thickness 1.5mm)	1
11044-U0821	Competition Head Gasket (diameter 88.5mm, thickness 1.5mm)	1
11044-U0825	L18/L20B Head Gasket (thickness 1.2mm) Requires use of 11045-N3120 Sealing Ring.	1
11045-N3120	Sealing Ring, required with 11044-U0825 Gasket. (diameter 88.8mm) Requires Block Modifications.	4



L18 Counterweighted,
6 Bolt Racing Crankshaft



L16 Counterweighted,
6 Bolt Racing Crankshaft

part number	description	quantity
-------------	-------------	----------

VALVES

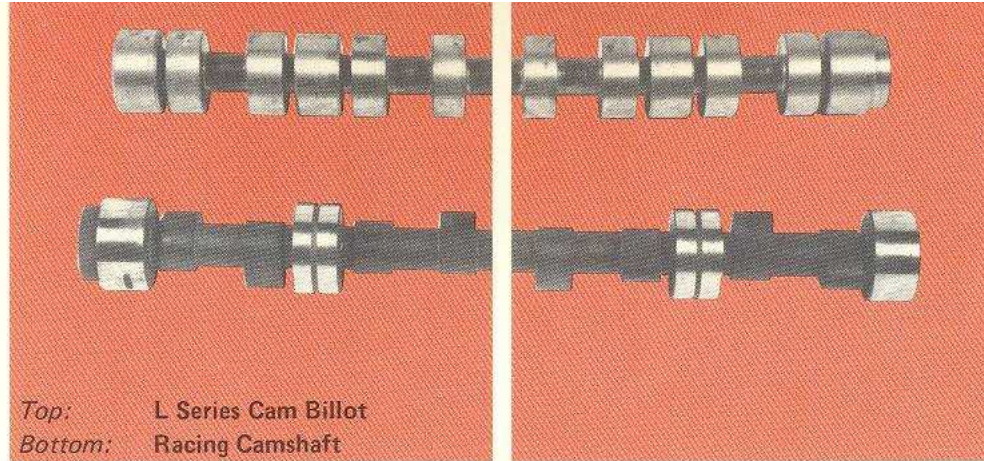
13201-A1100	1.65" Intake Valve (stock)	4
99996-M1030	1.65" Racing Intake Valve	4
13201-N4200	1.73" Intake Valve (stock)	4
99996-N1100	1.73" Racing Intake Valve	4
99996-N1120	Steel Intake Valve Seat(for 99996-N1100)	4
99996-M1040	1.299" Racing Exhaust Valve	4
13202-N0400	1.378" Exhaust Valve (stock)	4
99996-D1034	1.378" Racing Exhaust Valve	4
99996-M1045	Racing Valve Spring	8
99996-M1150	Aluminum Valve Spring Retainer	8
99996-M1050	Titanium Valve Spring Retainer	8

Racing Valves are lightened and reshaped for better flow.

VALVE LASH PADS

Are required to obtain correct rocker arm geometry when installing reground camshaft.

99996-M1180	.180 Valve Lash Pad	8
99996-M1230	.230 Valve Lash Pad	8
99996-M1240	.240 Valve Lash Pad	8
99996-M1260	.260 Valve Lash Pad	8
99996-M1270	.270 Valve Lash Pad	8
99996-M1280	.280 Valve Lash Pad	8
99996-M1290	.290 Valve Lash Pad	8
99996-M1300	.300 Valve Lash Pad	8



Top: L Series Cam Billot
Bottom: Racing Camshaft

part number	description	quantity
-------------	-------------	----------

CAMSHAFTS

13001-22000SV	SSS Camshaft, .402" lift, 248° duration can be used with stock valve springs, retainers and valve lash pads.	1
99996-D1020	Slalom Camshaft, .475 lift, 275° duration	1
99996-D1038	Slalom Camshaft Kit, includes cam, aluminum retainers, valve springs, valve lash pads, rocker arms, keepers, & gaskets.	1
99996-D1021	Rally Camshaft, 450" lift, 252° duration.	1
99996-D1023	Race Cam, .540 lift, 314° duration, 103° lobe centers	1
99996-D1028	Race Cam, .595 lift, 300° duration, 106° lobe centers	1
99996-D1027	Unground Steel Cam Billit	1

Because of the variable rocker arm ratio on L-Series engines, lift and duration figures may vary from engine to engine.

part number	description	quantity
-------------	-------------	----------

LUBRICATION SYSTEM

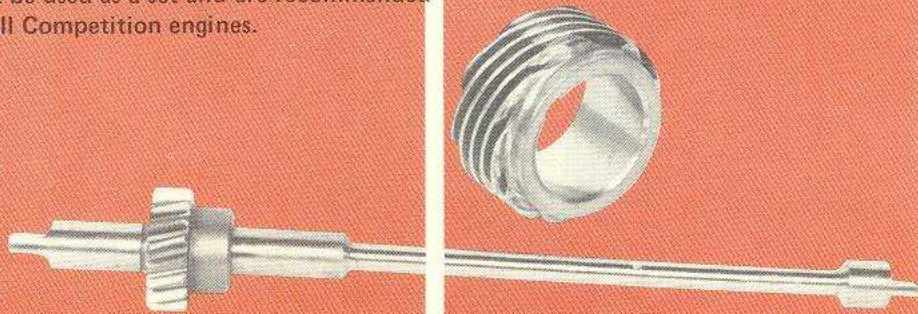
15040-73400	Oil Pump/Distributor Drive Spindle	1
15043-73400	Brass Drive Gear	1
15010-A1110	Competition Oil Pump (required when using an oil cooler)	1
15133-E4620	Inner Oil Pump Spring	1
15133-22010	Outer Oil Pump Spring <i>These springs are used as a set to modify the stock oil pump for increased pressure.</i>	1

21300-A1100	Oil Cooler Kit	1
11110-22010	510/610 Cast Aluminum Oil Pan, 6 qt.	1
15050-A1110	Deep reach oil pick up assembly, required with aluminum oil pan	1
99996-D1130	510 Competition Oil Pan with pick up	1
99996-K1130	610/710 Competition Oil Pan with pick up	1

RADIATORS

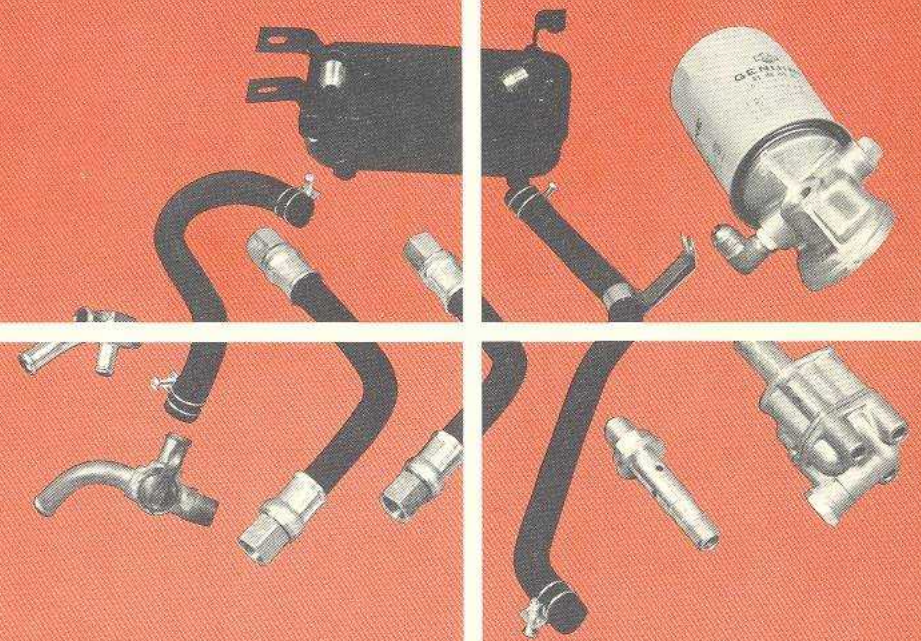
21400-22001	510 Factory Aluminum Radiator	1
21400-A9410	610 Factory Aluminum Radiator	1
21501-22001	Upper Radiator Hose (required when installing 510 or 610 Factors Aluminum Radiator)	1

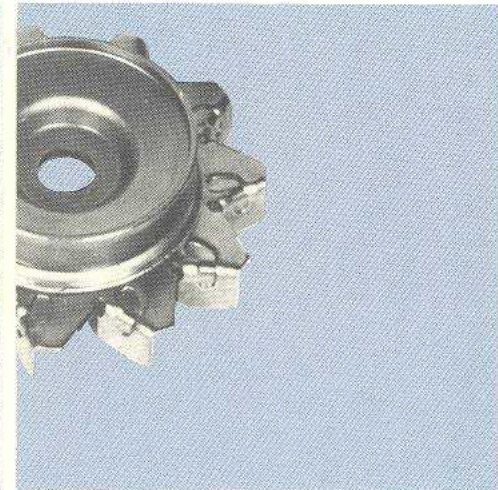
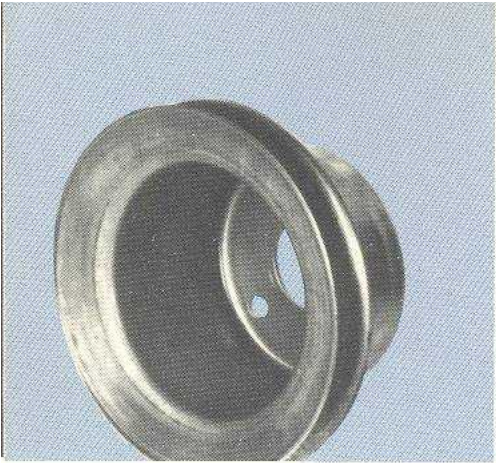
This Oil Pump Distributor Drive Spindle and Brass Drive Gear replace the stock steel units. The Spindle and Drive Gear must be used as a set and are recommended for all Competition engines.



Right: Aluminum Oil Pan

Below: Oil Cooler, Pump, Filter, Lines and Fittings





Deep Groove Pulley Set

part number description quantity

FUEL SYSTEM

Solex Induction System

14330-22010	Heat Shield	1
16010-25505	44 mm Solex Carburetor Set	1
16174-25501	Insulators	4
16175-25500	Inner Gasket	4
16176-20100	Outer Gasket	4
99996-D1120	Solex Linkage Assembly (cable type)	1

99996-D1125	Solex Intake Manifold (requires SSS Cylinder Head)	1
99996-D1128	Competition, Manifold Gasket (reusable)	1

SU Induction System

14002-22026	Intake Manifold (requires SSS Cyl. Head)	1
16010-22004	38mm SU Carburetor Set	1
14012-22002	Overflow Tube Bracket	1
16031-22002	Front Overflow Tube	1
16032-A5100	Rear Overflow Tube	1
14035-23000	Manifold Gasket	1

14330-U0800	Heat Shield	1
16174-15800	Insulators	2
16174-14600	Insulator (required when installing 46mm 2L roadster carburetors)	2

17520-A8700	Fuel Tube	1
18410-26900	Choke Cable (510 only)	1
99996-D1110	SSS Linkage Assembly	1

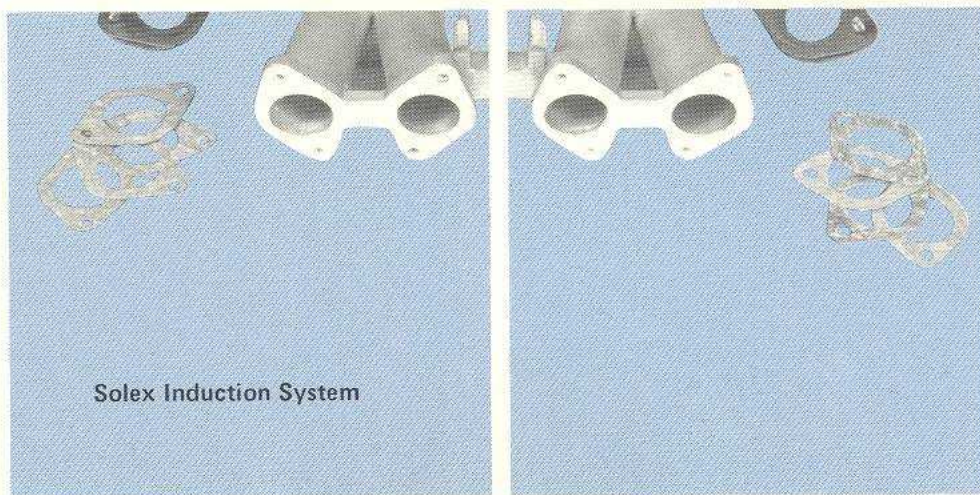
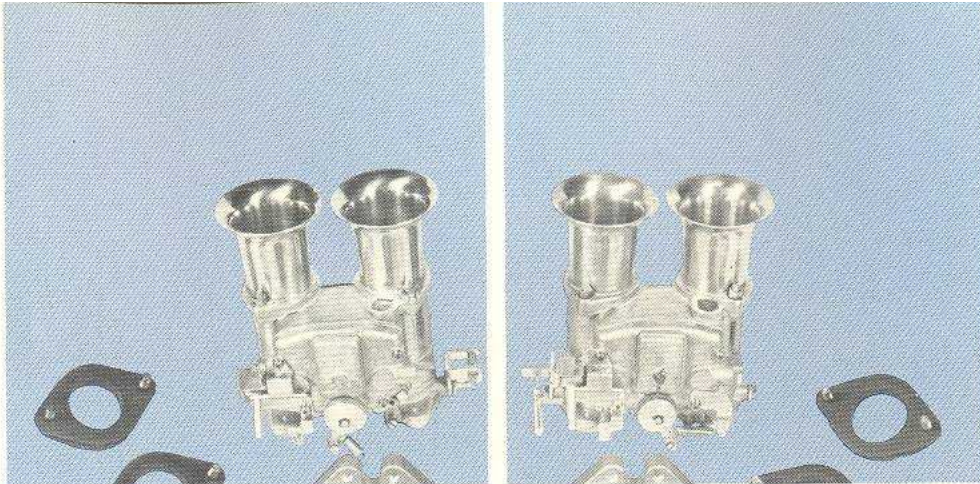
17010-22010	Electric Fuel Pump	1
16420-E0100	Blanking Plate for Manual Pump	1
16404-28520	Replacement Filter for Pump	1

part number description quantity

PULLEYS

99996-E1060	Competition Crankshaft Dampener, requires use of Z water pump pulley and modified alternator bracket.	1
12303-22010	Crankshaft Pulley 101mm diameter	1
21051-22010	Water Pump Pulley 134.6mm diameter	1
13070-22010	Chain Tensioner	1

45
9.2



Solex Induction System

part number	description	quantity
13215-22010	Rocker Pivot Bushing	8
13234-22010	Rocker Pivot	8
14002-22010	Intake Manifold 50mm	1
16010-22010	50mm Solex Carburetor Set	1
14035-22010	Manifold Gasket	1
16174-14610	Insulator	4
16175-14610	Inner Gasket	4
16176-14610	Outer Gasket	4

The following four components must be used as a set to make up the FIA throttle linkage assembly. This set-up is designed to use a cable-type throttle linkage and consequently, the accelerator pedal itself must also be modified.

16360-22075	Linkage Kit	1
18100-A1100	Accelerator Wire	1
18103-A1100	Bracket	1
18104-A1100	Washer	1

The FIA Engine Kit is a complete package designed by the Datsun Factory for FIA sedan racing. The FIA engine components will work only on the FIA cylinder head, and the entire system can be used on L16, L18 or L20B engines.

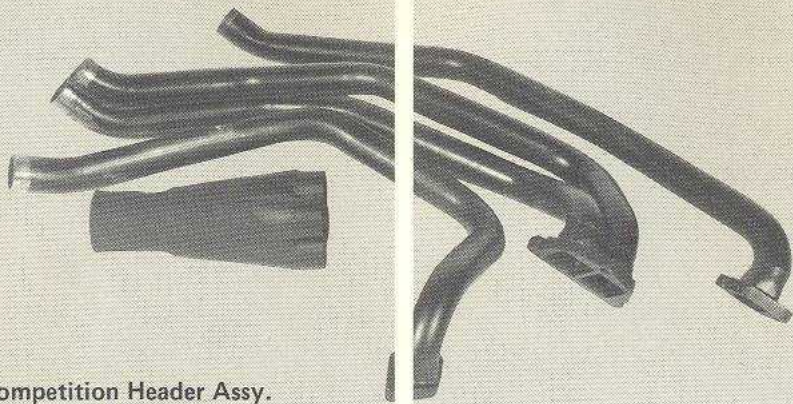
part number	description	quantity
-------------	-------------	----------

FIA ENGINE KIT

11041-22010	Cylinder Head	1
11058-22010	Head Bolt Washer	10
13201-22010	Titanium Intake Valve 1.812mm dia.	4
13202-22010	Sodium Filled Exhaust Valve 1.375mm diameter	4
13207-22010	Valve Seal	8
13209-22010	Valve Retainer	8

ELECTRICAL SYSTEM

22100-U2800	SSS Distributor, single point	1 3450
22110-22000	Replacement Spring Set for SSS Distributor	1
22132-21000	Replacement Cam for SSS Distributor	1
23100-22010	Racing Alternator with Pulley (reduced drag)	1
23151-22010	Replacement pulley for racing alternator	1



Competition Header Assy.

part number	description	quantity
TRANSMISSIONS		
32010-E8752	Late Type 5-Speed <i>When a late type 5-Speed is installed in a 510/610, the shift lever hole in the floor pan must be repositioned.</i>	1
11341-N2020	Late 5-Speed Rear Transmission Mount	1
37000-22015	Drive Shaft, required when using late 5-speed.	1
99996-E3030	Shifter Kit for late type 5-Speed	1

part number	description	quantity
-------------	-------------	----------

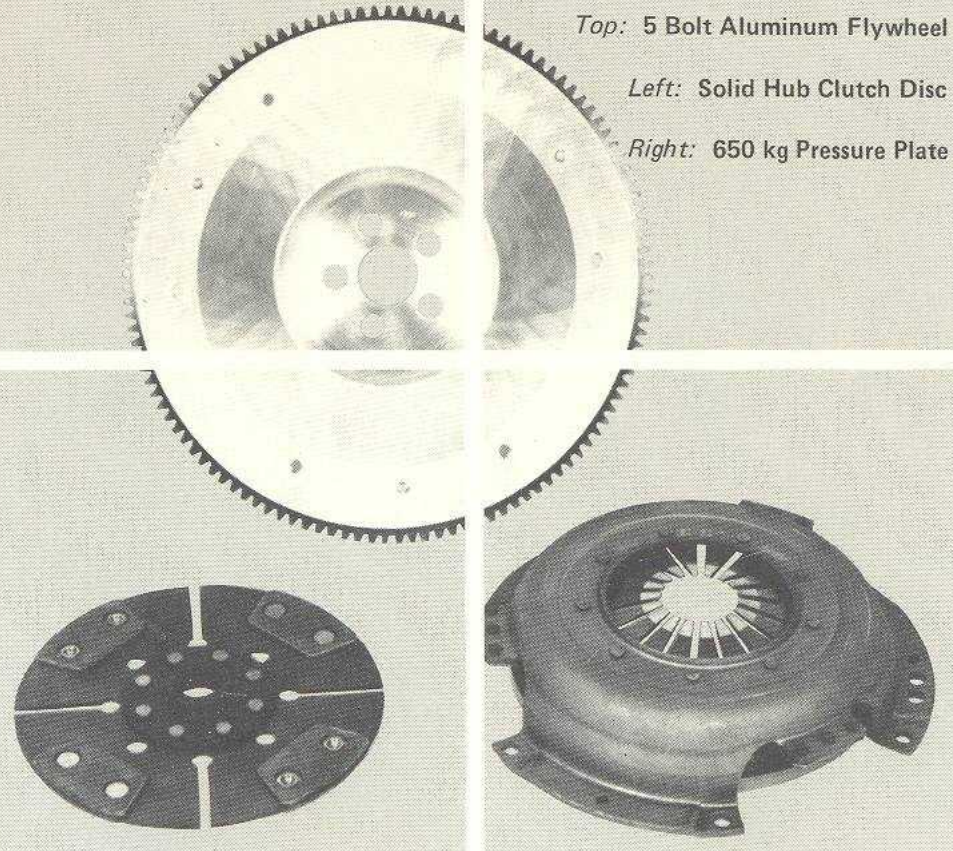
EXHAUST SYSTEM

99996-D8000	510 Trans-Am Exhaust System, only for use with 5-Speed Transmission, Transmission cross member must be modified.	1
-------------	--	---

FLYWHEELS & CLUTCH

99996-D1010	L16/L18 5-bolt aluminum flywheel for use with stock crank, 8 lbs.	1
12310-22010	L16/L18 Lightened Factory Steel Flywheel; 6-bolt, 15 lbs. (must use 6-bolt race crankshaft)	1
99996-D1011	6-bolt aluminum flywheel for use with 6-bolt race crankshaft. 8 lbs.	1
12315-22010	Flywheel Bolt, required on 6-bolt crankshaft	6
12314-22010	Lock Tab, required on 6-bolt crankshaft	3
30210-20111	650 kg pressure plate, (to 7-73)	1
99996-D3040	Solid Hub Clutch Disc, race only. Not compatible with 99996-D1010/11 flywheels.	1

The 650 kg pressure plate was originally designed for the Datsun Roadster, but will bolt onto the 510/610 without any modification. It can be used with the stock disc. The stock unit is rated at 500 kg.



Top: 5 Bolt Aluminum Flywheel

Left: Solid Hub Clutch Disc

Right: 650 kg Pressure Plate

DIFFERENTIALS

There are three different sizes of differentials which will interchange between the 510/610 series. These rear ends are coded as R160, R180, and R190. A clutch type limited slip is utilized in these units.

All 510/610 vehicles are equipped with the R160 units. All R160 size differentials ordered from Datsun Competition come with an optional ring gear bolt and lock

tab set (99996-D3100). These should be installed in the differential no matter in what car the unit is to be installed. Complete instructions are included and time required for installing the set is approximately one hour.

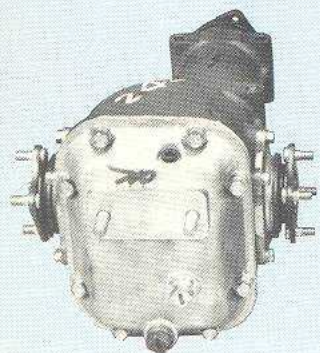
The R180 differential is standard in 240-Z and 260-Z (except 2+2 manual)

The R190 differentials are optional heavy duty units adaptable to both Z and 510/610 vehicles.

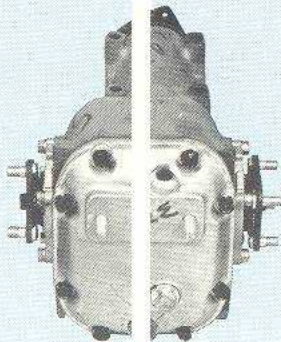
part number	description	quantity
-------------	-------------	----------

38300-21110	4.111 Limited Slip Differential (R160)	1 ^{200.00}
38300-21010	4.375 Limited Slip Differential (R160)	1
38300-22110	4.625 Limited Slip Differential (R160)	1
38300-E4310	3.9 Limited Slip Differential (R180)	1 ²⁰⁰
38300-A0200	4.4 Limited Slip Differential (R190)	1 ²⁵⁰

The above units will fit all 510's and 610's (to 8/74)



R160



R180



R190

part number	description	quantity
-------------	-------------	----------

38300-N2110	4.111 Limited Slip Differential (R160)	1
38300-N2210	4.375 Limited Slip Differential (R160)	1
38300-N2310	4.625 Limited Slip Differential (R160)	1

The preceding three differentials are for the 610 (from 9/74)

R160 Differential

38420-21010	Limited Slip Assembly (R160)	1
99996-D3100	Ring Gear Bolt, Lock Tab Set, required when installing R160 limited slip assembly	1
38427-21010	Pinion Shaft	1
38431-21010	Pressure Ring	2
38432-21010	Disc, Flat (with ears)	4
38433-21010	Disc, Flat (without ears)	4
38434-21010	Differential Case Screw	4
38435-21010	Disc, Curved (with ears)	2
38436-21010	Disc, Curved (without ears)	2

R180 Differential

38420-E4610	Limited Slip Assembly, 2 pinion (R180)	1
38420-E8700	Limited Slip Assembly, 4 pinion (R180)	1
38102-E4610	Ring Gear Bolt, required when installing R180 Limited Slip Assembly	1
38427-E4610	Pinion Shaft (2 pinion type)	1
38427-E8700	Pinion Shaft (4 pinion type)	1
38431-E4610	Pressure Ring (2 pinion type)	2
38431-E8700	Pressure Ring (4 pinion type)	2
38432-E4610	Disc, Flat (with ears)	4
38433-E4610	Disc, Flat (without ears)	4
38434-E4610	Differential Case Screw	4

part number	description	quantity
-------------	-------------	----------

38435-E4610	Disc, Curved (with ears)	2
-------------	--------------------------	---

38436-E4610	Disc, Curved (without ears)	2
-------------	-----------------------------	---

R190 Differential

38420-A0220	Limited Slip Assembly, 2 pinion (R190)	1
-------------	--	---

38420-R1110	Limited Slip Assembly, 4 pinion (R190)	1
-------------	--	---

38102-68210	Ring Gear Bolt required when installing R190 Limited Slip Assembly	8
-------------	--	---

38427-A0200	Pinion Shaft	1
-------------	--------------	---

38431-68210	Pressure Ring	2
-------------	---------------	---

38432-68210	Disc, Flat (with ears)	2
-------------	------------------------	---

38433-68210	Disc, Flat (without ears)	2
-------------	---------------------------	---

08320-61210	Differential Case Screw	4
-------------	-------------------------	---

38432-A0200	Disc, Curved (with ears)	2
-------------	--------------------------	---

38433-A0200	Disc, Curved (without ears)	2
-------------	-----------------------------	---

The Competition Department also maintains a complete inventory of bearings and seals for the R190 differential.

RING & PINION SETS

38100-23100	3.7 Ring and Pinion (R160)	1
-------------	----------------------------	---

38100-21100	4.111 Ring and Pinion (R160)	1
-------------	------------------------------	---

38100-21000	4.375 Ring and Pinion (R160)	1
-------------	------------------------------	---

38100-22100	4.675 Ring and Pinion (R160)	1
-------------	------------------------------	---

38100-E4100	4.111 Ring and Pinion (R180)	1
-------------	------------------------------	---

38100-E4105	4.375 Ring and Pinion (R180)	1
-------------	------------------------------	---

38100-E4300	4.625 Ring and Pinion (R180)	1
-------------	------------------------------	---

38100-E4400	4.875 Ring and Pinion (R180)	1
-------------	------------------------------	---

38100-E4500	5.143 Ring and Pinion (R180)	1
-------------	------------------------------	---



Left: **R190 Differential Cover Assembly**

Below: **Ring and Pinion (R160) R160 Limited Slip Assy. Ring Gear/Lock Tab Set**



part number	description	quantity
-------------	-------------	----------

38100-A0150	3.9 Ring and Pinion (R190)	1
-------------	----------------------------	---

38100-A0250	4.4 Ring and Pinion (R190)	1
-------------	----------------------------	---

99996-M3020	510/610 Extra Capacity Rear Differential Cover. R190 Differential only.	1
-------------	---	---

DIFFERENTIAL OIL COOLER

38501-E8775	Oil Cooler	1
-------------	------------	---

38503-E8775	Electric Oil Pump	1
-------------	-------------------	---

part number description quantity

BRAKES

41060-16506	DS11 Brake Pad RH	2
41070-16506	DS11 Brake Pad LH	2
44060-14600	"Green Stuff" Brake Shoe (Primary)	2
44070-14600	"Green Stuff" Brake Shoe (Secondary)	2
44100-26710	¾" Wheel Cylinder	2
44100-26715	11/16" Wheel Cylinder	2

SUSPENSION

510/610 Factory Race Suspension

54010-22030	Front Spring, (height 203mm)	2
54302-22032	Front Strut (R)	1
54303-22032	Front Strut (L)	1

The Front Suspension Components will also fit a 710.

144.80

55020-22030	Rear Spring (height 226mm)	2
55037-U0175	Rear Spring Spacer (610 only) thickness = 20mm	2
55240-22030	Rear Bumper Assy., height = 69mm	2
56210-22032	Rear Shock Absorber	2

The Factory Race Suspension will lower the car approximately 2½ inches and greatly improve its handling. The front springs in the kit cannot be used with stock struts.

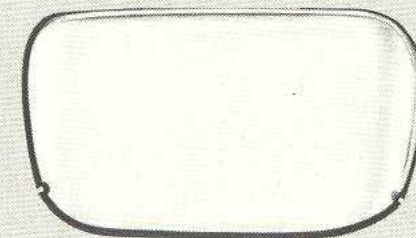
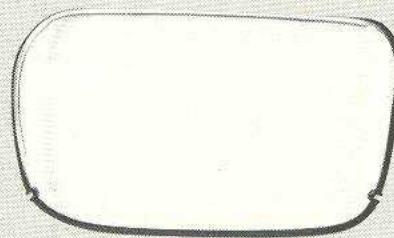
When installing either the racing or rallying front struts on 610/710's manufactured after 8/73, the front hubs, bearings and brake rotors must be replaced with 510 units.

part number description quantity

510/610 Rally Suspension Kit

54010-22033	Front Spring, height = 293.5mm	2
54302-22035	Front Strut (R)	1
54303-22035	Front Strut (L)	1
<i>The Front Suspension Components will also fit a 710.</i>		
55020-22031	Rear Spring, length = 284mm	2
55037-U0175	Rear Spring Spacer (610 only) thickness = 20 mm	2
55240-21003	Rear Rebound Bumper Assy. height = 88mm	2
56210-22029	Oil Filled Rear Shock Absorber	2
56210-22020	Gas filled Rear Shock Absorber	2

The Rally Suspension Kit is the same set-up the Factory team used for its wins in the East African Safari Rally. The kit will increase ground clearance approximately 1 inch. When ordering, specify gas or oil filled rear shock.

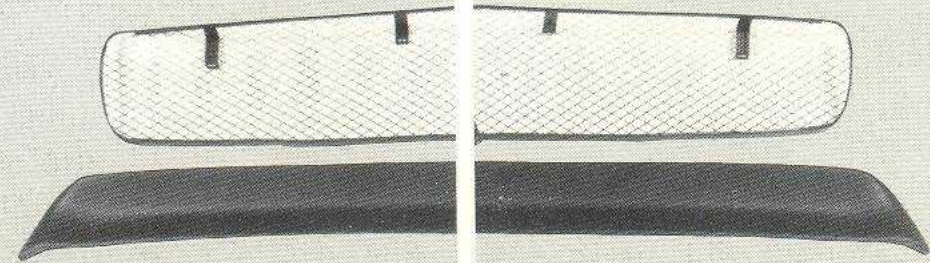


610 (1973 only) Head Lamp Covers

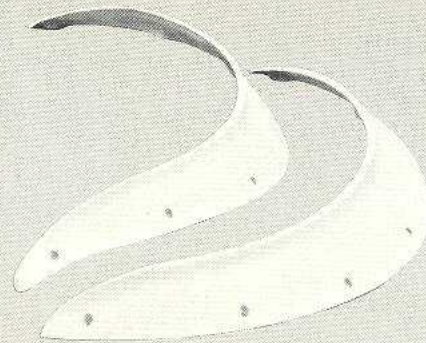
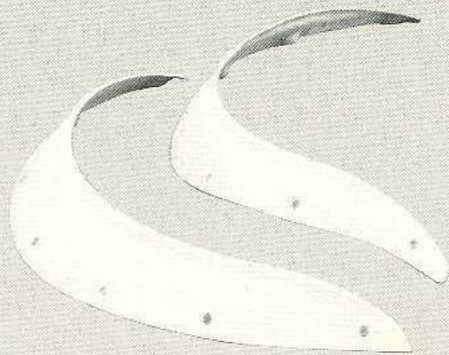
part number	description	quantity
-------------	-------------	----------

REPLACEMENT BODY PANELS

63820-22075	510 Fiberglass Fender Flare (RF)	1
63821-22075	510 Fiberglass Fender Flare (LF)	1
78910-22075	510 Fiberglass Fender Flare (RR)	1
78911-22075	510 Fiberglass Fender Flare (LR)	1
80100-22075	510 Fiberglass Door (R) 2-door only	1
80101-22075	510 Fiberglass Door (L) 2-door only	1



Top: 610 (1973 only) Rally Grill
Bottom: 610 (All) Factory Rear Spoiler



Fiberglass Fender Flares

part number	description	quantity
-------------	-------------	----------

99996-K6010	710 Fiberglass Hood	1
99996-K6020	710 Fiberglass Rear Deck Lid (coupe only)	1
99996-K6030	710 Fiberglass Front Fender with Flare (R)	1
99996-K6035	710 Fiberglass Front Fender with Flare (L)	1
99996-K6040	Fender Flare (RR)	1
99996-K6045	Fender Flare (LR)	1

63820-U1075	610 Fiberglass Fender Flare (RF)	1
63821-U1075	610 Fiberglass Fender Flare (LF)	1
78910-U1075	610 Fiberglass Fender Flare (RR)	1
78911-U1075	610 Fiberglass Fender Flare (LR)	1
B6040-00003	610 Rally Grill (to 7/73)	1
B6040-00004	610 Plexiglass Head Lamp Covers (to 7/73)	1
D2070-00102	610 Rear Spoiler	1

Bolt on Fiberglass Flares are designed and built by the Factory for FIA racing and rallying. These flares are not complete fenders (except 710 front units).

1200 B210



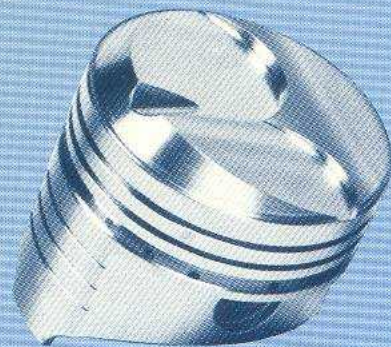
part number	description	quantity
99996-H1021	A12 Ring Set for Forged Pistons	1
99996-H1027	A13 Ring Set for Forged Pistons	1
99996-H1013	Piston Pin for 99996-H1011 Piston only	4
99996-H1018	Piston Pin and Aluminum Button for 99996-H1017 piston only.	4
99996-H1014	Spirlox, (.687) A12/A13 Rods	8
99996-H1019	Spirlox, (.750) A14 Rods	8

part number	description	quantity
-------------	-------------	----------

FORGED PISTONS

99996-H1011	A12 Forged Piston (.040) with Pin and Spirlox	4
99996-H1017	A13 Forged Piston (Std) with Pin and aluminum button. (to be used with A14 Rods)	4

All Forged Pistons have approximately 11.5 to 1 compression ratio and require cylinder head modification.



Forged Piston



Cast Piston

CAST PISTONS

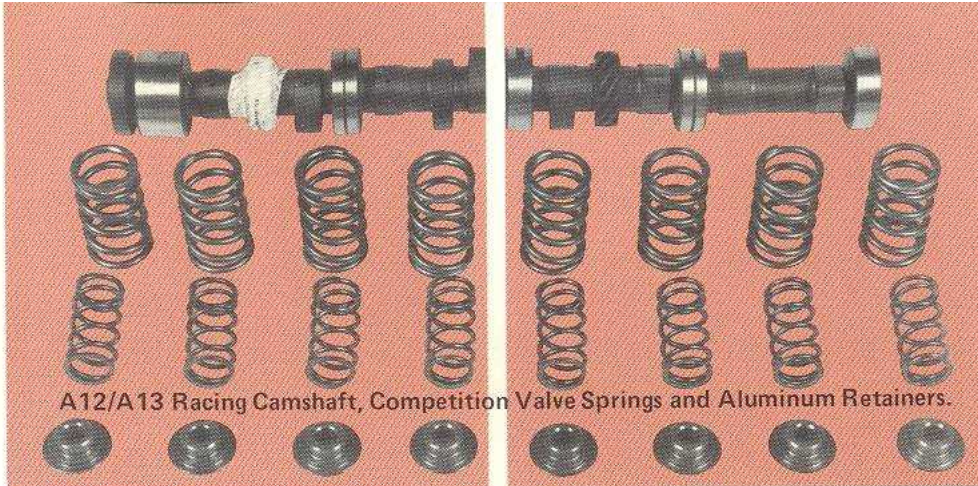
12010-H2310	A12 Cast Piston (Std.)	4
12033-B3040	Ring Set for above	1

BEARINGS

12111-25720	Rod Bearing, approximately .001" thinner for increased oil clearance	8
99996-H1090	Main Bearing Set .001" thinner for increased oil clearance	1

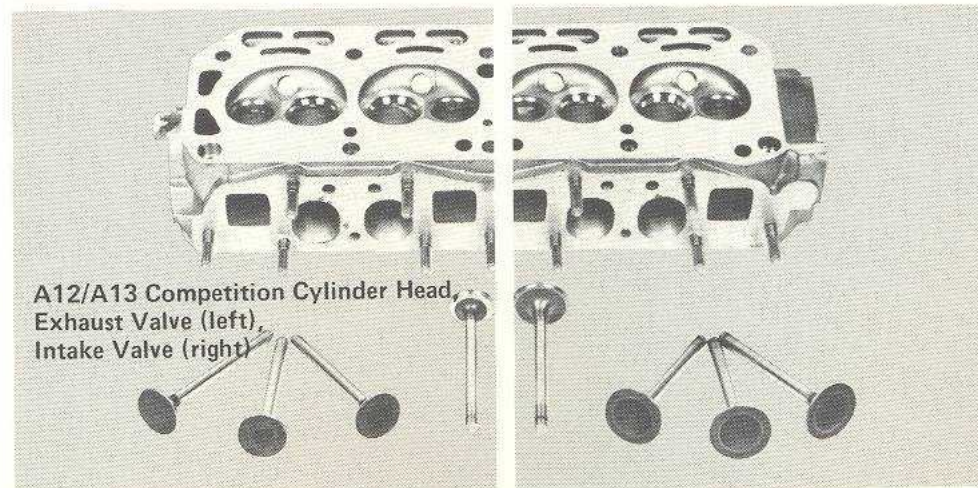
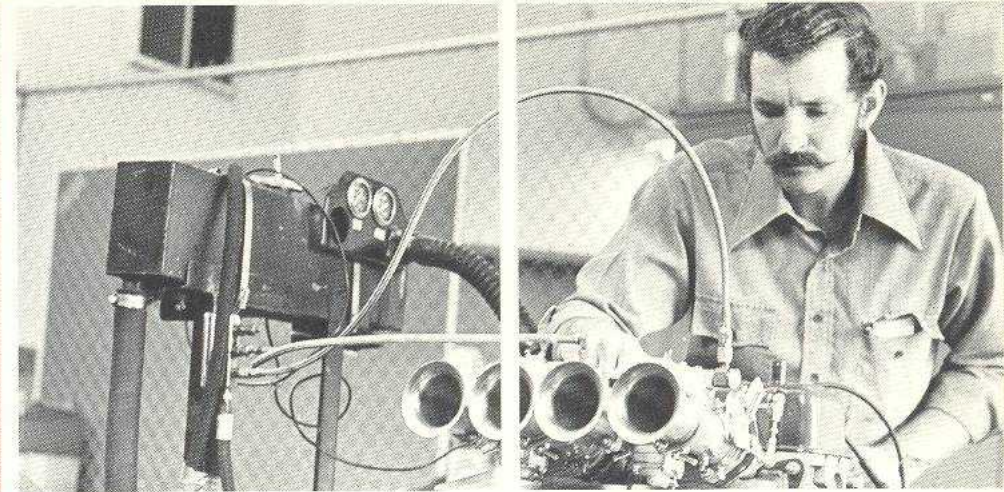
ENGINES

99996-H1000	A13 Full Race Engine	1
-------------	----------------------	---

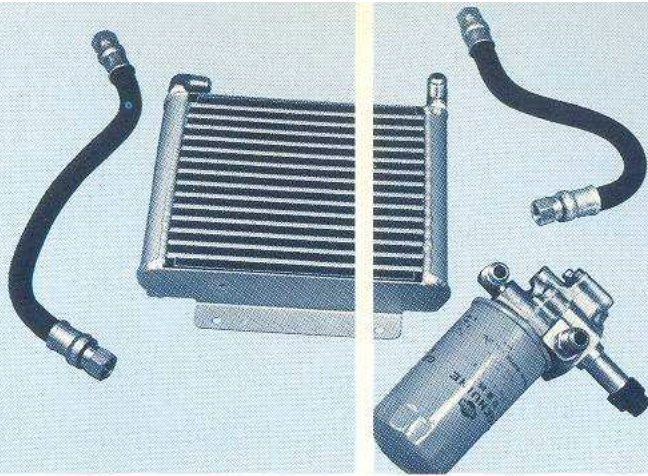


part number	description	quantity
11044-H2300	GX Head Gasket	1
11044-H2325	Competition Head Gasket (T=0.8mm)	1
VALVES		
13201-H2300	GX Intake Valve	4
13201-M0020	Intake Valve, 2.1mm oversize	4
13202-H2300	GX Exhaust Valve	4
13202-M0820	Exhaust Valve, 1.1mm oversize	4

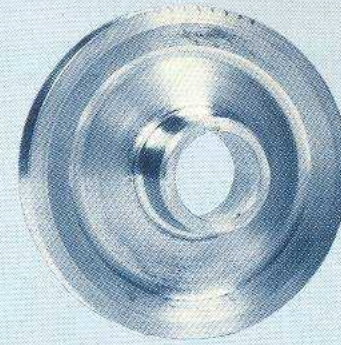
part number	description	quantity
CYLINDER HEAD		
11041-H2301	A12 Cylinder Head	1
11041-H5702	A13/A14 Cylinder Head	1
11056-H2301	Head Bolt	9
11057-H2301	Head Bolt	1
<i>Head Bolts supplied by the Competition Department have a higher tensile strength than stock head bolts.</i>		



13203-H2300	GX Valve Spring, Inner	8
13204-H2301	GX Valve Spring, Outer	8
99996-H1130	Competition Valve Spring Kit (includes aluminum retainers)	1
CAMSHAFT		
13001-H2300	A12, GX Camshaft .331 Lift 256° duration	1
99996-H1035	A12 Race Camshaft .480 Lift 300° duration	1
99996-H1030	A13/A14 Race Camshaft .480 Lift 300° duration	1
99996-H1031	A13/A14 Electromotive Race Camshaft .485 Lift 280° duration	1



Oil Cooler Kit



Camshaft Pulley



Water Pump Pulley



Competition Oil Pump



1200 Aluminum Oil Pan

part number	description	quantity
-------------	-------------	----------

PULLEYS

12303-27720	Crankshaft Pulley (101mm)	1
21051-27720	Water Pump Pulley (100mm)	1

FUEL SYSTEM

GX/SU Induction System

14003-H2330	GX Intake Manifold (requires 11041-H2301/H5702 cylinder head when used on A12/A13 engine)	1
16010-H2336	SU Carburetor, front	1
16010-H2337	SU Carburetor, rear	1
16361-H2300	Throttle Shaft (linkage)	1
16174-H2300	Insulator	4
17523-H2302	GX Fuel Tube	1
16031-H2300	Overflow tube, front	1
16031-H2301	Overflow Tube, rear	1
18410-H1602	GX Choke Cable (1200 only)	1
14035-H2300	GX Manifold Gasket	1
14330-H2303	GX Heat Shield	1

part number	description	quantity
-------------	-------------	----------

LUBRICATION SYSTEM

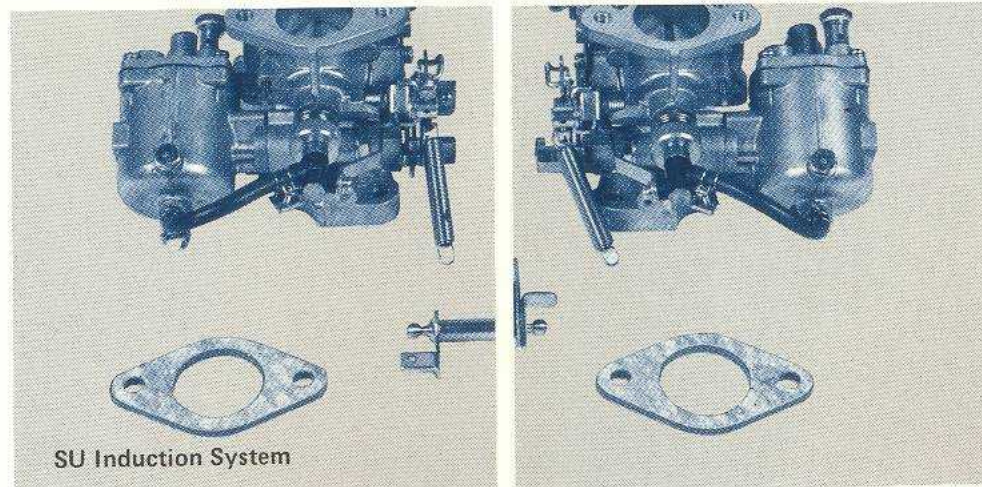
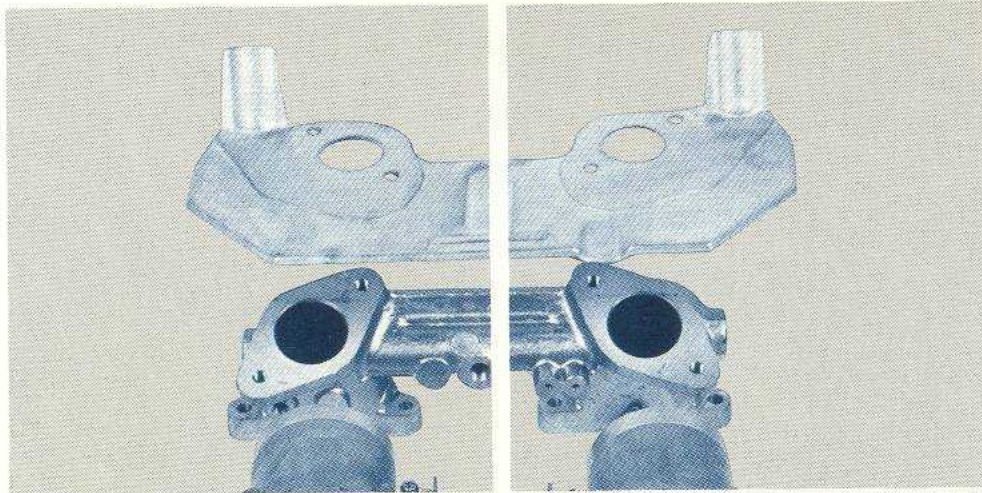
15000-25722	Competition Oil Pump (includes fittings for cooler)	1
21300-H2375	Oil Cooler Kit (includes cooler, heavy duty oil pump, lines & hardware)	1
11110-H2310	1200 Cast Aluminum Racing Oil Pan, 5 qts.	1
99996-H1050	B210 Oil Pan, 5 qts.	1
21400-H2023	1200 Factory Aluminum Radiator	1

part number description quantity

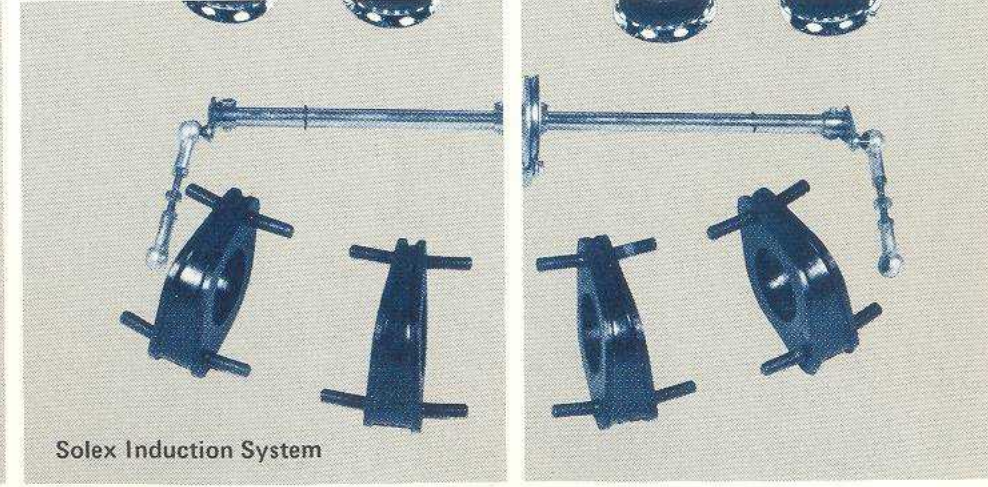
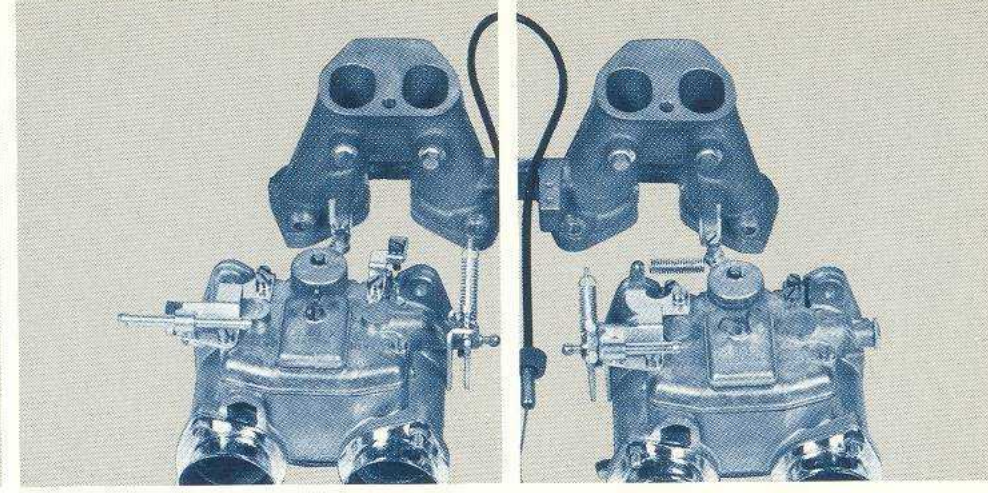
17010-22010	Electric Fuel Pump	1
16404-28520	Replacement Filter for Electric Fuel Pump	1
	Solex Induction System	
99996-H1140	Solex Manifold, 40mm Carburetors	1
99996-H1144	Solex Manifold, 44mm Carburetors	1
	<i>Both Manifolds require 11041-H2301/ H5702 cylinder head when used on A12/A13 engines.</i>	

part number description quantity

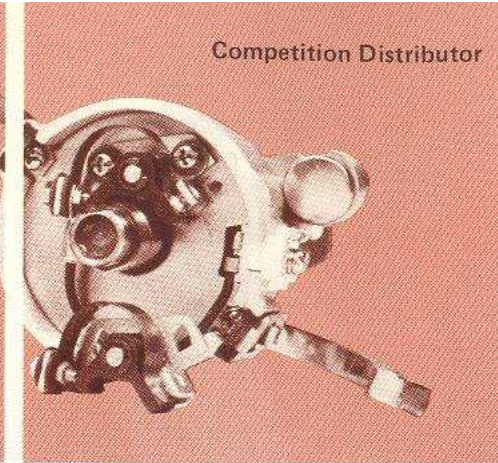
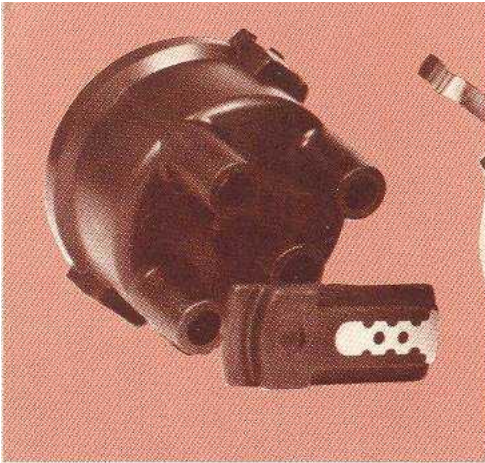
16010-H2310	40mm Solex Carburetor Set	1
16360-H2310	Solex Linkage Assy.	1
18200-25720	Solex Throttle Cable	1
16174-H2310	Solex Insulators	4
16176-H2310	Insulator Gasket	8
14035-H2310	Solex Manifold Gasket	1



SU Induction System



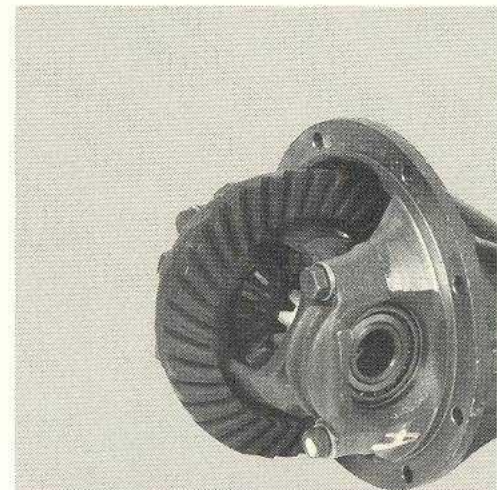
Solex Induction System



Competition Distributor

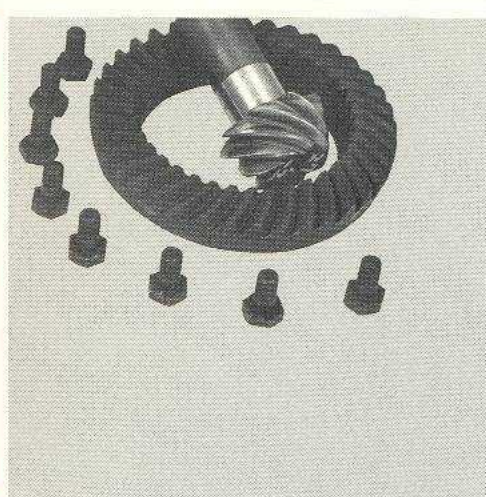
part number	description	quantity
TRANSMISSIONS		
32010-H7220A	5-Speed Transmission (not legal for 1200 in SCCA) <i>5-Speed Transmission Gear Ratio</i>	1
	1st	2.676
	2nd	1.691
	3rd	1.398
	4th	1.182
	5th	1.000

part number	description	quantity
EXHAUST SYSTEM		
99996-H8000	B210 Racing Headers	1
99996-H8100	B210 Racing Exhaust Pipe 2- 1/2" Designed to be used with racing headers. Exits out rear of car (no muffler included, requires fabrication of hangers)	1
ELECTRICAL SYSTEM		
22100-25720	Competition Distributor, Single point, mechanical advance only. (Spark advance characteristics are the same as stock unit)	1
22145-27720	Point Set for 22100-25720	1



FLYWHEEL AND CLUTCH		
99996-H1040	Aluminum Flywheel, 8 lbs.	1
30210-H3121	360 kg pressure plate (to 8/74)	1

3rd Member w/e Limited Slip,
Limited Slip Center Section,
Ring and Pinion,
Extra length Ring Gear Bolts



part number description quantity

11322-H7201 Transmission Mount, required when installing 5-Speed in 1200 1

11310-H6200 Transmission Mount 1

11321-H1000 Insulator 1

The above 2 pieces are required when installing 5-Speed in B210

32865-H7200 5-Speed Gear Shift Knob 1

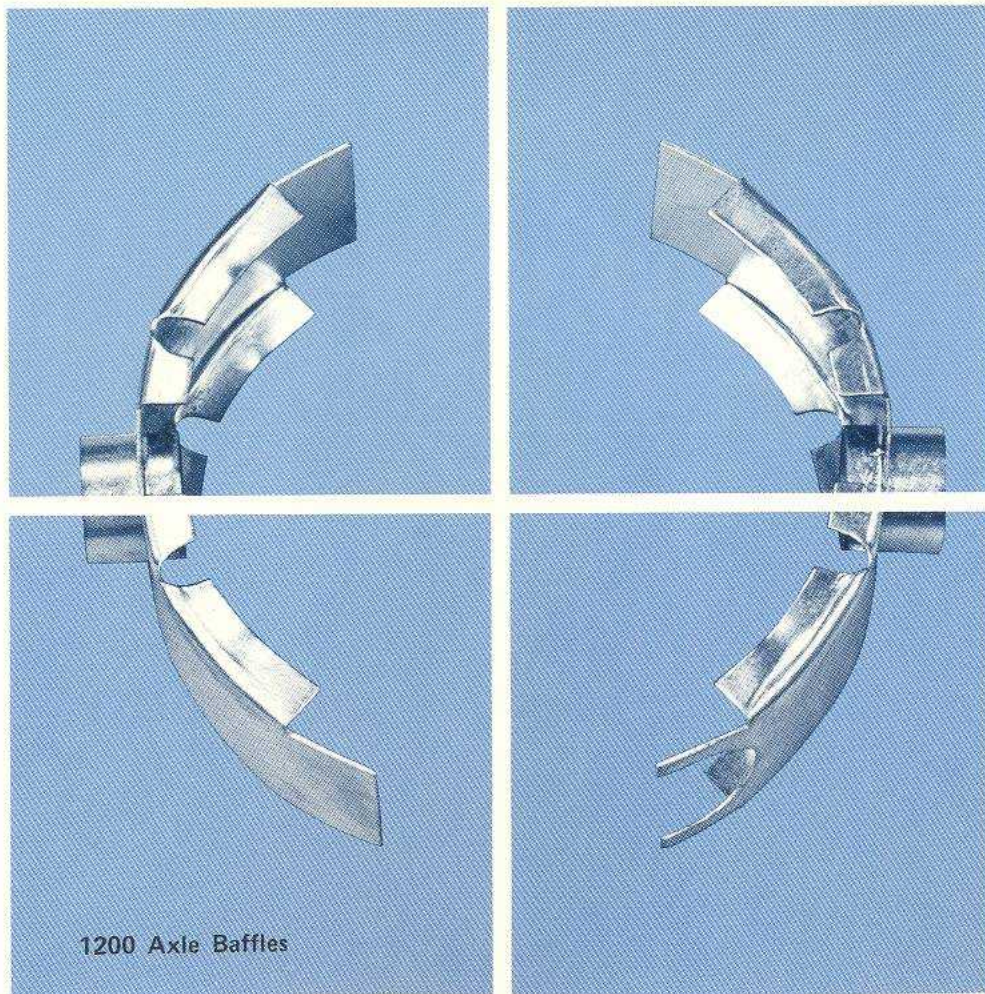
32030-27720 Four Speed middle close ratio set option 1 (to 8/74 only) 1

part number description quantity

99996-H3010 Four Speed Ultra-close ratio set, option 2 (to 8/74 only) 1

Optional Gear Ratios for 4-Speed Transmission (to 8/74 only)

Gear	Stock Ratio	Middle-Close Ratio	Ultra-Close Ratio
1st	3.757	2.862	2,169
2nd	2.169	1.908	1,593
3rd	1.404	1.350	1,233
4th	1.000	1.000	1,000



DIFFERENTIAL

38300-H0700 4.375 Differential (without limited-slip) 1

38300-G0500 4.625 Differential (without Limited-slip) 1

38420-H1020 Limited Slip Assy. Clutch type 1

38102-22900 Ring Gear Bolt (required when installing limited-slip assembly) 8

38103-H1020 Lock Tab (required when installing limited slip assembly) 4

43015-25720 Axle Baffle (R) 1

43016-25720 Axle Baffle (L) 1

Axle Baffles are designed to keep differential oil from sloshing to the end of the axle tubes under hard cornering.

The limited slip assembly (38420-H1020) and axle baffle set (43015/6-25720) can be used only on vehicles manufactured up to 8/74.

RING & PINION

38100-H1100 4.111 Ring and Pinion (to 8/74) 1

38100-H0700 4.375 Ring and Pinion (to 8/74) 1

38100-G0400 4.625 Ring and Pinion (to 8/74) 1

part number description quantity

DIFFERENTIAL OIL COOLER

38501-E8775	Differential Oil Cooler	1
38503-E8775	Electric Oil Pump	1

BRAKES

99996-H7010	DS11 Brake Pad set, 1200	1
44060-27720	'Green Stuff' Brake Shoe (primary)	2
44070-27720	'Green Stuff' Brake Shoe (secondary)	2
44100-H3320	5/8" Wheel Cylinder	2

SUSPENSION

1200 Factory Adjustable Racing Suspension Kit

54010-H1070	Front Spring (height = 225mm)	2
54302-H1072	Strut (RF) Adjustable \pm 20mm	1
54303-H1072	Strut (LF) Adjustable \pm 20mm	1
55020-H1023	Rear Spring	2
55240-H1824	Rear Bump Rubbers (height = 50mm)	2
56200-H1024	Rear Shock Absorber, Sedan	2
56210-H1823	Rear Shock Absorber, Coupe	2

1200 Factory Rally Suspension Kit

54302-H1020	Strut (R)	1
54303-H1020	Strut (L)	1
56200-H1020	Rear Shock Absorber (Sedan)	2
56210-H1822	Rear Shock Absorber (Coupe)	2

Rally Suspension utilizes stock front and rear springs.

part number description quantity

B210 Factory Adjustable Racing Kit (Gas-filled)

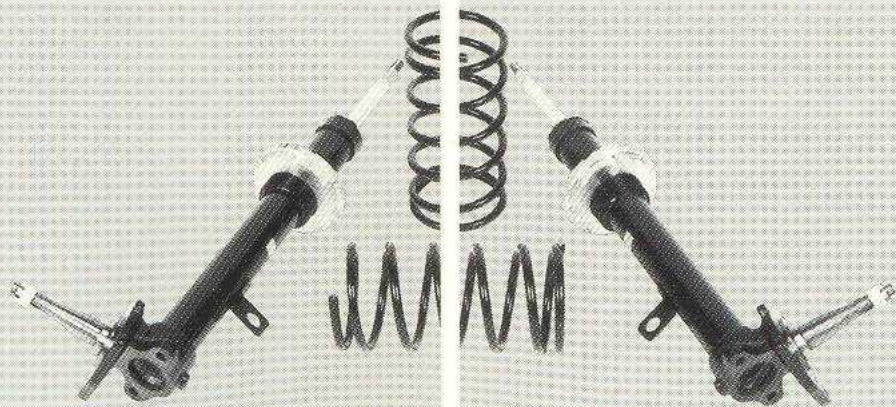
54010-H5020	Front Spring (height = 257mm)	2
54302-H5020	Strut (R) adjustable	1
54303-H5020	Strut (L) adjustable	1
55020-H5020	Rear Spring	2
55240-H5020	Rear Rebound Bumper (height = 92mm)	2
55247-H5020	Rear Spring U-bolt	4
56210-H5020	Rear Shock Absorber (coupe)	2
40052-H5020	Steering Arm (R)	1
40053-H5020	Steering Arm (L)	1

The Steering Arms are shorter than stock and will noticeably quicken the steering.

FIBERGLASS REPLACEMENT PANELS

1200

63820-H1075	Fender Flare (RF)	1
63821-H1075	Fender Flare (LF)	1

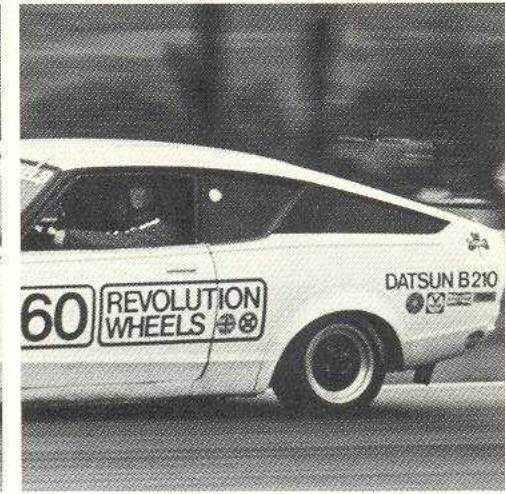
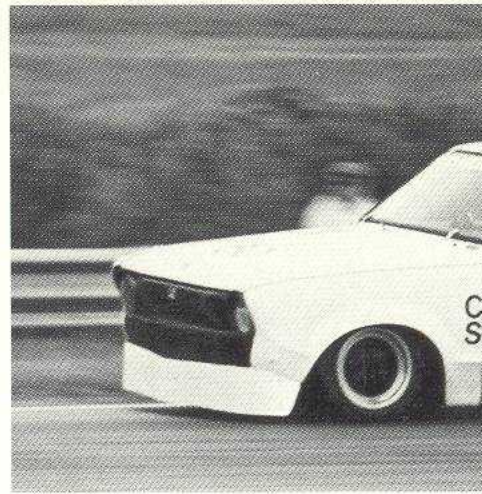
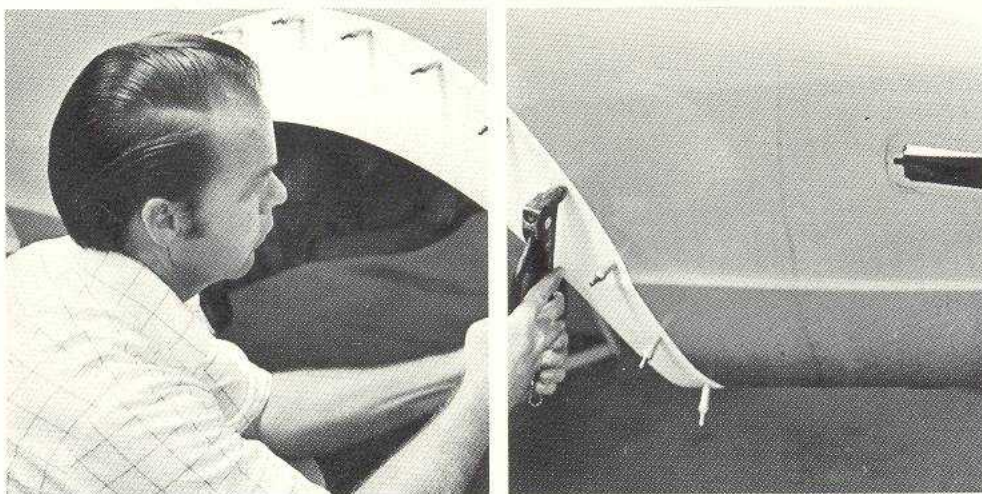
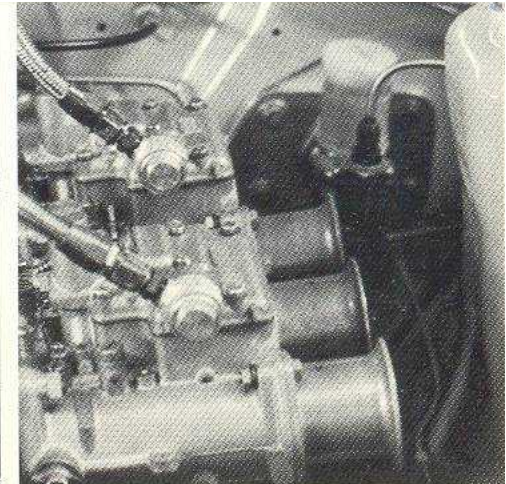
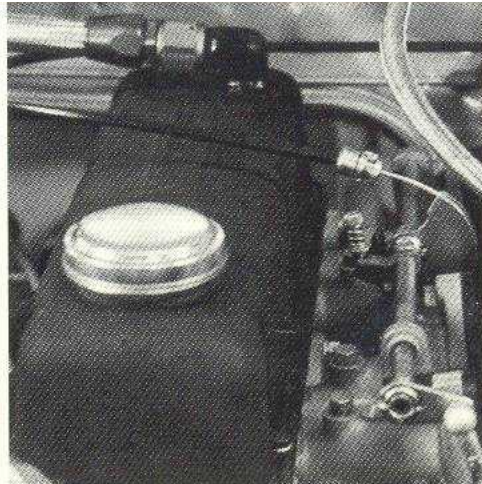


1200, Factory Adjustable Front Suspension

part number	description	quantity
-------------	-------------	----------

78910-H1075	Fender Flare (RR), Sedan	1
78911-H1075	Fender Flare (LR), Sedan	1
78910-H1875	Fender Flare (RR), Coupe	1
78911-H1875	Fender Flare (LR), Coupe	1

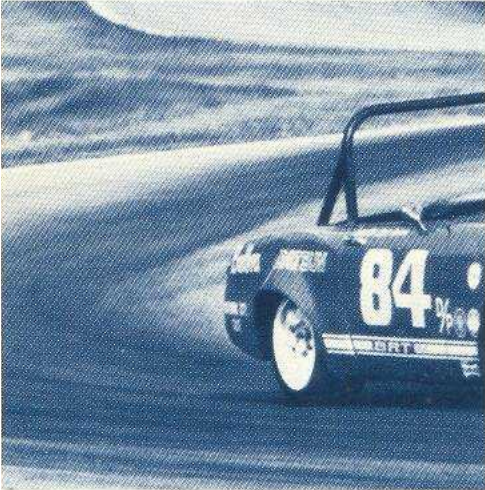
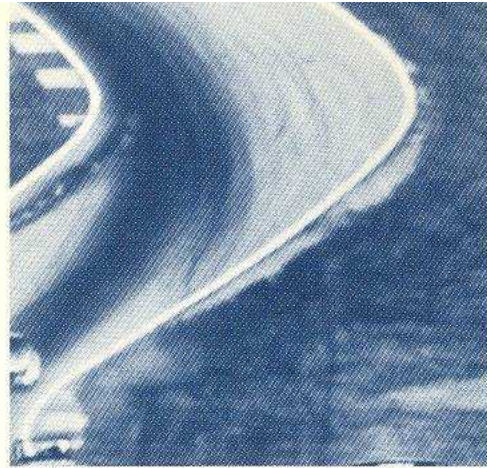
Bolt on fiberglass flares are designed and built by the Factory for FIA racing and rallying. These flares are not complete fenders.



part number	description	quantity
-------------	-------------	----------

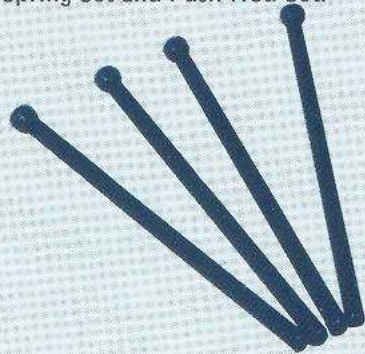
	B210	
99996-H6000	Front Spoiler, without brake ducts	1
99996-H6010	Fiberglass Hood	1
99996-H6020	Fiberglass Rear Deck	1
99996-H6030	Fiberglass Front Fender, with flare (R)	1
99996-H6035	Fiberglass Front Fender with flare (L)	1
98100-H5720	Factory Rear Spoiler, Coupe	1

1600 2000 Sports Car



part number	description	quantity
PISTONS		
99996-B1036	R16 Forged Piston, with Pin & Spirlox	4
99996-C1031	U20 Forged Piston, with Pin & Spirlox	4
99996-B1041	R16/U20 Ring Set	1
<i>Forged Pistons are .040 oversize and have a compression ratio of approximately 11.5 to 1. Use of forged pistons requires cylinder head modifications.</i>		
BEARINGS		
12207-73600	R16 Main Bearing Set, for vehicles up to engine number R-40000. (3 main bearing engines only), .001 thinner for increased oil clearance.	1
12111-25510	R16/U20 Rod Bearings, .001 thinner for increased oil clearance.	8
VALVES		
13201-14616	1.69" R16 Intake Valve (oversize)	4
11098-14601	R16 Intake Valve Seat	4
13202-14600	1.38" R16 Exhaust Valve (oversize)	4
11099-14601	R16 Exhaust Valve Seat	4
99996-B1060	R16 Valve Spring Set (springs, aluminum retainers)	1
99996-B1050	R16 Aluminum Push Rod Set only for use with Race Camshaft	1

R16 Racing Camshaft, Intake Valves, Exhaust Valves, Competition Valve Spring Set and Push Rod Set.



part number **description** **quantity**

CAMSHAFTS

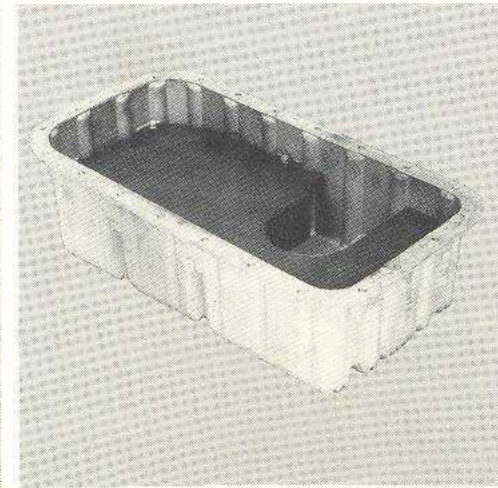
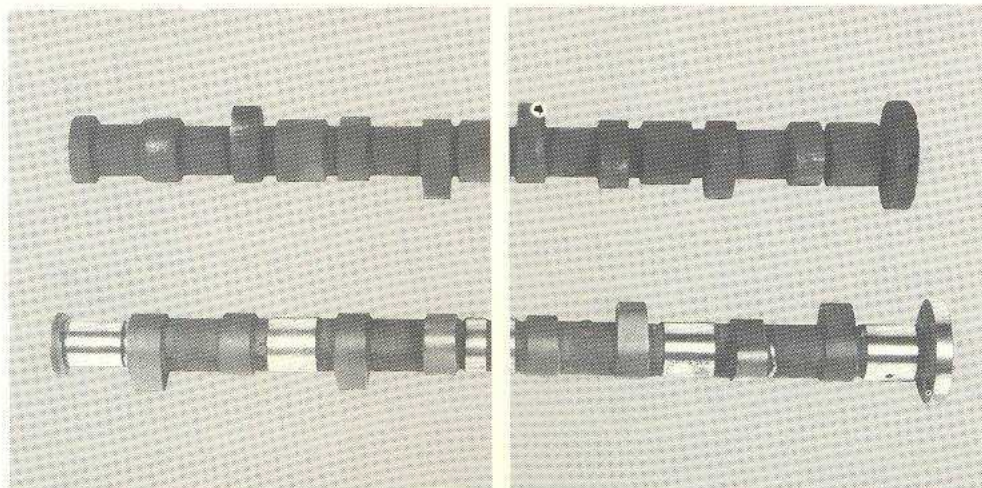
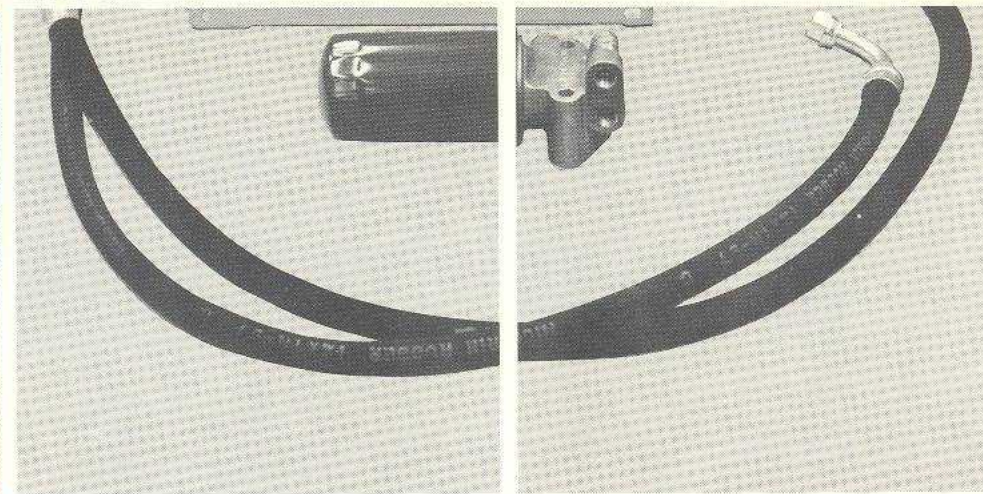
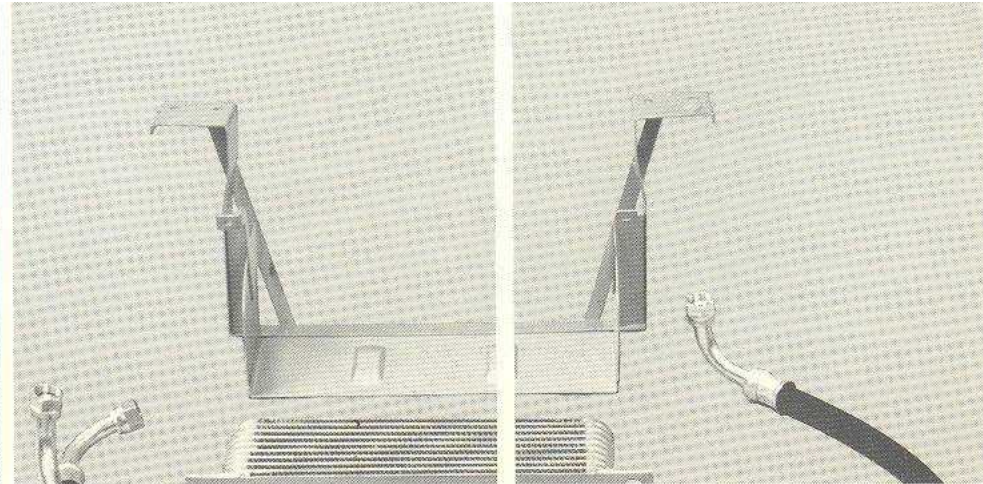
99996-B1020	R16 Race Camshaft, .480" Lift, 306° duration, requires use of longer push rods and valve spring kit.	1
13001-25500	U20, Solex Camshaft, .341" Lift, 256° duration	1
13001-25530	Unground U20 Cam Billit	1

GASKET

11044-14615	R16 Head Gasket (thickness 0.8mm)	1
-------------	-----------------------------------	---

LUBRICATION SYSTEM

15010-12210	Racing Oil Pump (for use with stock oil pan)	1
15010-25515	Racing Oil Pump (for use with aluminum oil pan)	1
11110-25500	Aluminum Oil Pan, 7.5 qts.	1
21300-25510	Oil Cooler Kit (includes cooler, lines, fittings and oil filter bracket)	1

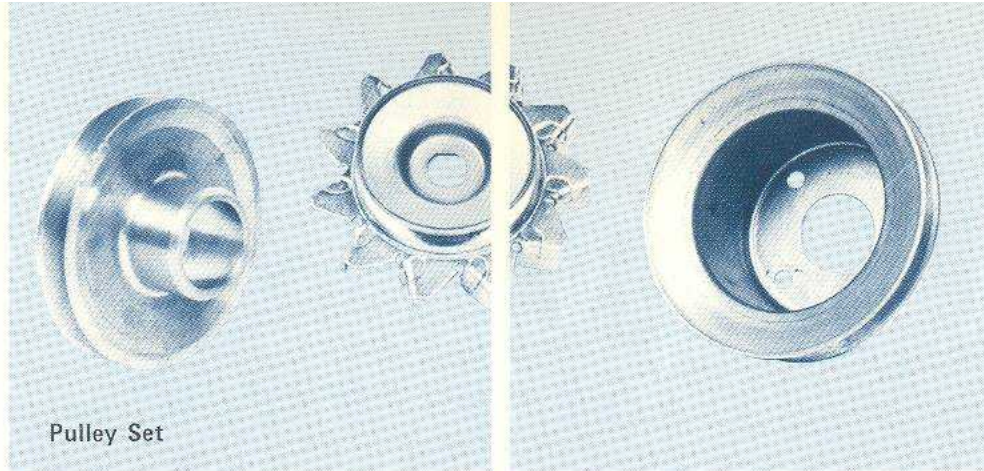


Above: Oil Cooler Kit
Far Left: 2 Litre Cam Billit and 2 Litre Solex Camshaft
Left: Aluminum Oil Pan

part number description quantity

PULLEYS

12303-14615	R16 Crankshaft Pulley	1
21051-14615	R16 Water Pump Pulley	1
23150-14615	R16 Alternator Pulley	1
12303-25515	U20 Crankshaft Pulley	1
21051-25510	U20 Water Pump Pulley	1
23150-25510	U20 Alternator Pulley	1



Pulley Set

FUEL SYSTEM

99996-C1040	U20, Complete Solex Induction Kit (Air Cleaners not included)	1
-------------	--	---

The Solex Induction Kit is a complete package ready to assembly and install on any 2L Roadster. The only other item needed to complete the 150 HP Solex conversion is the Solex Camshaft (13001-25500).

16500-25501	Solex Air Cleaner Assy.	1
16546-25500	Replacement Air Filter for 16500-25501	1
17010-22010	Electric Fuel Pump	1
16420-E0100	Blanking Plate for Mechanical Pump	1

16404-28520	Replacement Filter for Electric Fuel Pump	1
-------------	---	---

ELECTRICAL SYSTEM

22140-14410	R16/U20 High Tension Contact Set (with Platinum Points)	1
-------------	--	---

FLYWHEEL AND CLUTCH

99996-B1010	R16 Aluminum Flywheel (8 lbs)	1
99996-C1010	U20 Aluminum Flywheel (8 lbs)	1
30210-20111	650 kg Clutch Cover	1
99996-D3040	Solid Hub Clutch Disc for Racing only. Not compatible with 99996-B/C1010 Flywheel.	1

part number description quantity

TRANSMISSION

Early Type 5-Speed Transmission Gear Sets

99996-J3020	Stock Ratio	1
99996-J3010	Option No. 1, Middle Close Gear Set	1
NMCRK-32011	Option No. 2, Ultra Close Gear Set	1

5-Speed Optional Gear Sets

	Stock	Option 1	Option 2
1st	2.937	2.678	1.858
2nd	1.858	1.704	1.388
3rd	1.311	1.262	1.217
4th	1.000	1.000	1.000
5th	0.852	0.852	0.852
Rev.	2.922	2.922	2.922

Early style transmission gear sets listed include gear assemblies, keys, snap rings, and gasket set. Kits will not convert a 4-speed to a 5-speed transmission; also, they cannot be used in Warner type transmissions.

part number **description** **quantity**

DIFFERENTIALS

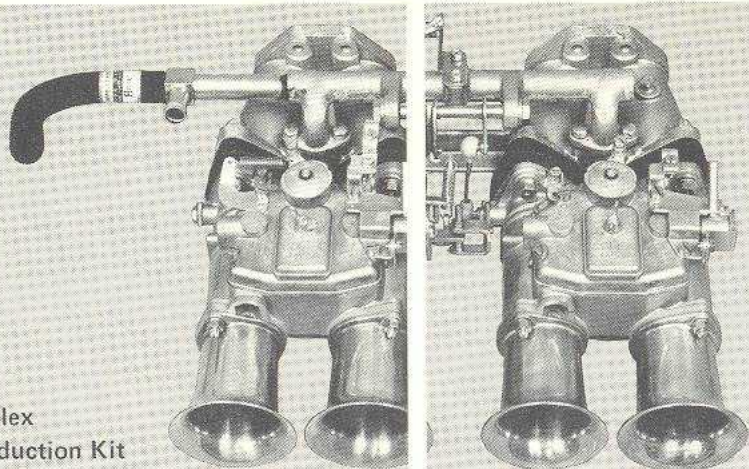
38300-25510	3.7 Limited Slip Differential	1
38300-14610	3.889 Limited Slip Differential	1
38300-16320	4.111 Limited Slip Differential	1
38300-13220	4.375 Limited Slip Differential	1
38300-17920	4.625 Limited Slip Differential	1
38300-25523	4.875 Limited Slip Differential	1
38300-17720	5.125 Limited Slip Differential	1

part number **description** **quantity**

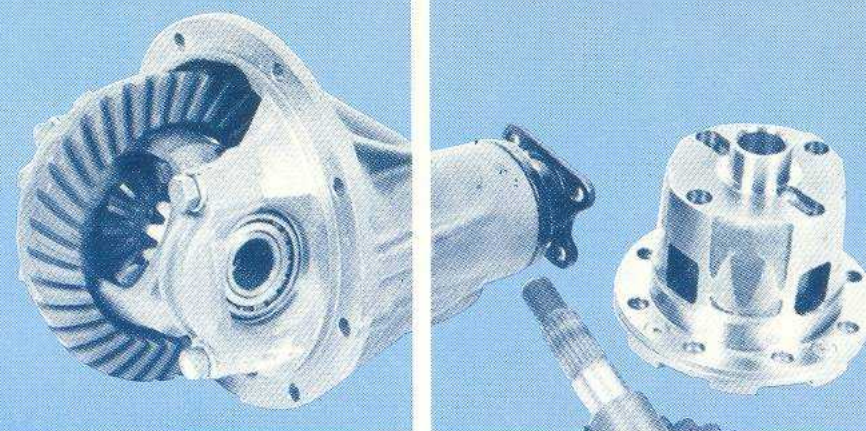
RING & PINION

38100-61001	4.111 Ring and Pinion	1
38100-26000	4.375 Ring and Pinion	1
38100-36800	4.625 Ring and Pinion	1
38100-20600	4.875 Ring and Pinion (can only be used as replacement for 38300-25523)	1
38100-37000	5.125 Ring and Pinion	1
38100-19901	5.874 Ring and Pinion	1

**Solex
Induction Kit**



38420-16320	Clutch Type Limited Slip Unit, aluminum housing	1
38420-16330	Clutch Type Limited Slip Unit, cast iron housing	1
38423-16300	Side Gear	2
38427-16300	Pinion Shaft	1
38431-16300	Pressure Ring	2
38432-16300	Friction Plate (with ears)	4
38433-16300	Friction Disc (T = 2.0 mm)	4
38433-16301	Friction Disc (T = 2.1 mm)	4
38434-16300	Differential Case Screw	2



All Differentials use a clutch type limited slip assembly and all are also applicable to the 510 station wagon.

Clockwise from the top:
Third member with Limited Slip Assembly; Limited Slip Center Section; Ring and Pinion



part number description quantity

SPEEDOMETER PINION

Optional Speedometer Pinions Available for Roadster with 5-Speeds

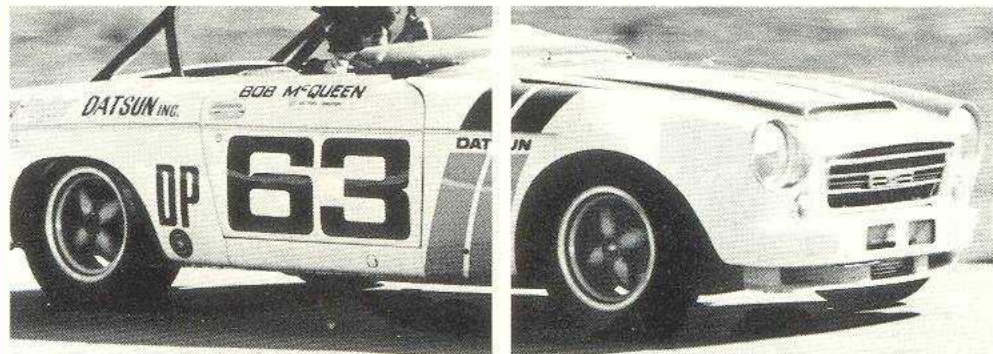
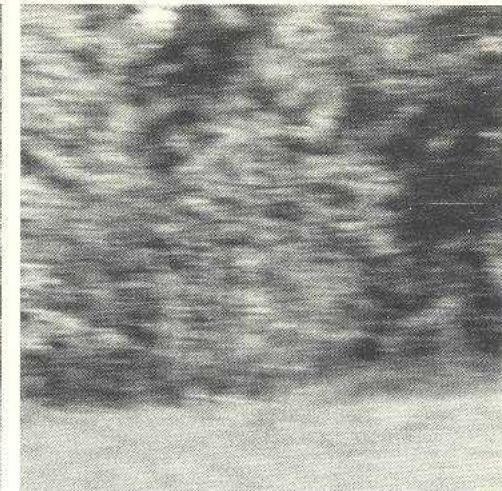
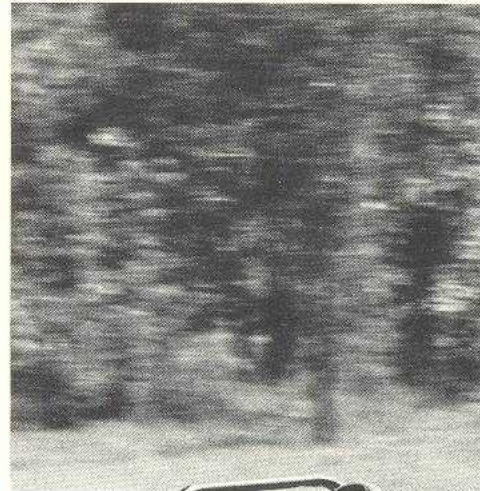
32703-78100	Speedometer Pinion 16T Yellow Gear Ratio 3.364	1
32703-78101	Speedometer Pinion 17T Black Gear Ratio 3.545	1
32703-78102	Speedometer Pinion 18T Blue Gear Ratio 3.700	1
32703-78103	Speedometer Pinion 19T White Gear Ratio 3.900	1
32703-78104	Speedometer Pinion 20T Red Gear Ratio 4.111	1
32703-86401	Speedometer Pinion 21T Purple Gear Ratio 4.375	1
32703-86402	Speedometer Pinion 22T Orange Gear Ratio 4.625	1
32703-86403	Speedometer Pinion 23T Green Gear Ratio 4.875	1
32707-66300	Speedometer Sleeve Assy. Applicable to pinions whose number of teeth is 20 to 23.	1

When installing a 5-Speed Transmission or an optional rear axle ratio, the stock speedometer drive pinion must be replaced with one which will compensate for the new gear ratio. If the stock pinion is not replaced, the speedometer will be inaccurate.

part number description quantity

BRAKES

41060-14601	DS11 Front Brake Pad	4
44060-14600	'Green Stuff' Brake Shoe (primary)	2
44070-14600	'Green Stuff' Brake Shoe (secondary)	2
44100-16505	Rear Wheel Cylinder 11/16"	2





part number

description

quantity

SUSPENSION

54010-25510	Competition Front Spring	2
54050-25510	Front Rebound Bumper	2
55020-25510	Competition Rear Spring	2
55240-25510	Rear Rebound Bumper	2

The Competition Springs will lower the ride height of the Roadster approximately 1 3/4".

54611-25575	21mm Front Stabilizer Bar	1
54613-25575	Bushing for 21mm Front Bar	2
54611-25510	23mm Front Stabilizer Bar	1
54613-25510	Bushing for 21mm Front Bar	2

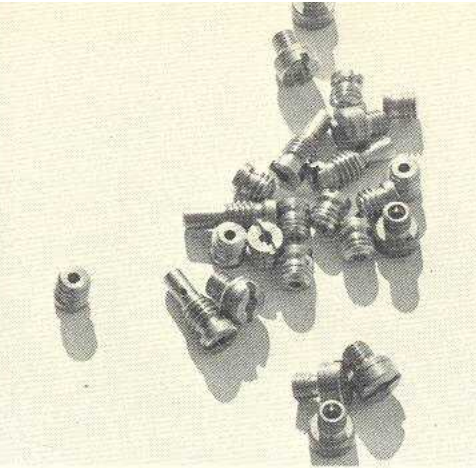
FIBERGLASS FENDER FLARES

63820-25500	Front Fender Flare (R)	1
63821-25500	Front Fender Flare (L)	1



Fiberglass Fender Flares

Misc



part number	description		quantity
			Req. Per Carb.
SOLEX AIR JETS (Countersunk Type)			
16036-H0222	Jet Number	120	2
16036-H0223		125	2
16036-H0224		130	2
16036-H0225		135	2
16036-H0226		140	2
16036-H0227		145	2
16036-H0228		150	2
16036-H0229		155	2
16036-25720		160	2
16036-25724		165	2
16036-25721		170	2
16036-25725		175	2
16036-25722		180	2
16036-25726		185	2
16036-25521		190	2
16036-25723		200	2
16036-25522		210	2
16036-25523		230	2
16036-25520		250	2
SOLEX PILOT JETS			
16189-25520	Jet Number	52.5	2
16189-25521		55	2
16189-25522		60	2
SOLEX CHOKES			
99996-M1138	Choke Size	38 mm (44mm Carb.)	2
99996-M1140	Choke Size	40 mm (44mm Carb.)	2
16017-A0200	Choke Size	32 mm (40mm Carb.)	2
SOLEX NEEDLE & SEAT ASSEMBLY			
99996-M1000	Size	2.0 mm	1

part number	description		quantity
			Req. Per Carb.
SOLEX MAIN JETS			
16033-25922	Jet Number	110	2
16033-25923		115	2
16033-25924		120	2
16033-25925		125	2
16033-25926		130	2
16033-25927		135	2
16033-25928		140	2
16034-25522		145	2
16034-25521		150	2
16034-25520		155	2
16033-25528		160	2
16033-25520		180	2
16033-25521		190	2
16033-25522		200	2
16033-25523		210	2
16033-25524		220	2
16033-25525		230	2
16033-25526		240	2
16033-25527		250	2

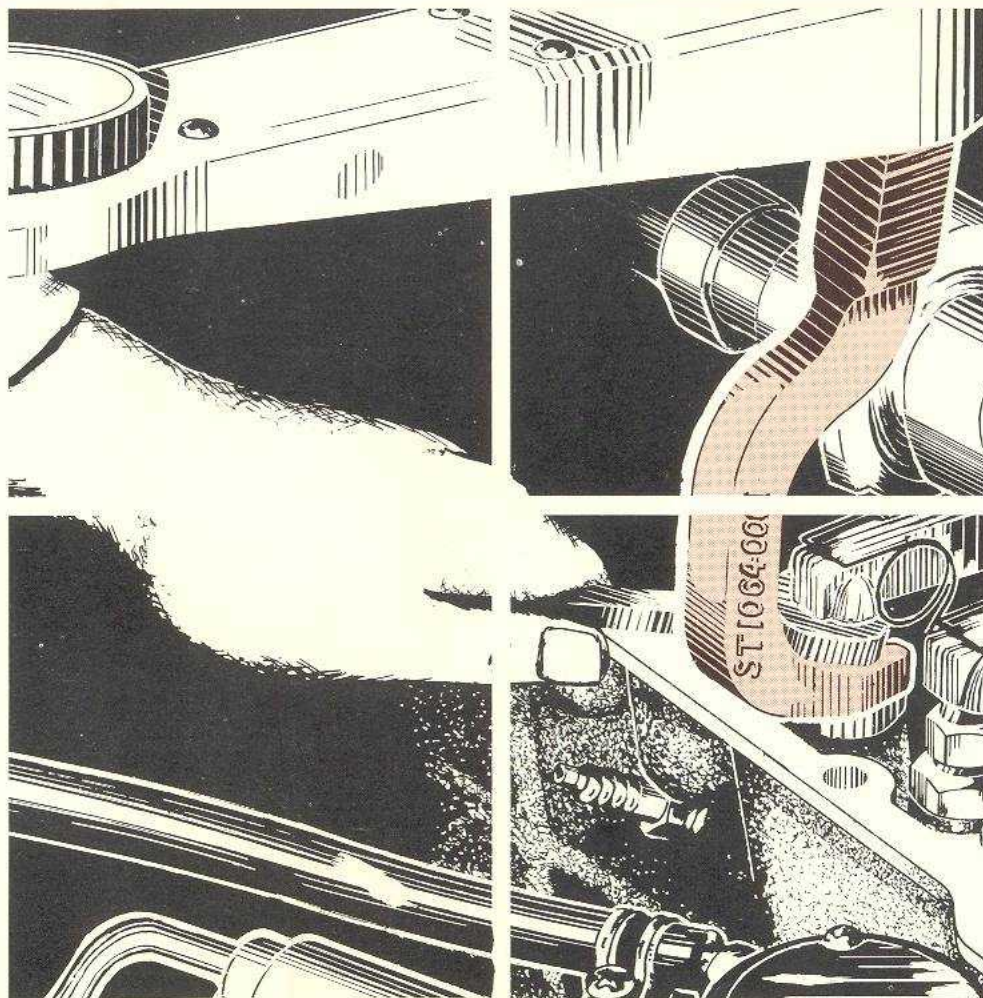
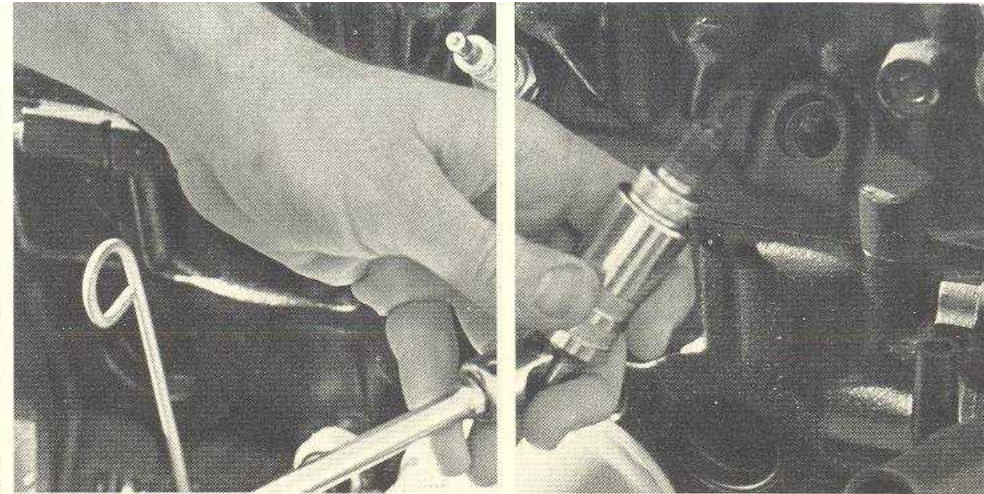
part number	description	quantity
-------------	-------------	----------

(Box of 10)

SPARK PLUGS

Champion Spark Plugs
(3/4" Reach & 14mm Thread)

99996-0N10Y N10Y	Projected Nose Plugs (Listed Hot to Cold)	1
99996-00N9Y N9Y		1
99996-00N8Y N8Y		1
99996-00N7Y N7Y		1



part number	description	quantity
-------------	-------------	----------

(Box of 10)

99996-00N6Y N6Y	Projected Nose Plugs (Listed Hot to Cold)	1
99996-0N60Y N60Y		1
99996-00N2G N2G	Gold Palladium Plugs (Listed Hot to Cold)	1
99996-0N59G N59G		1
99996-0N57G N57G		1

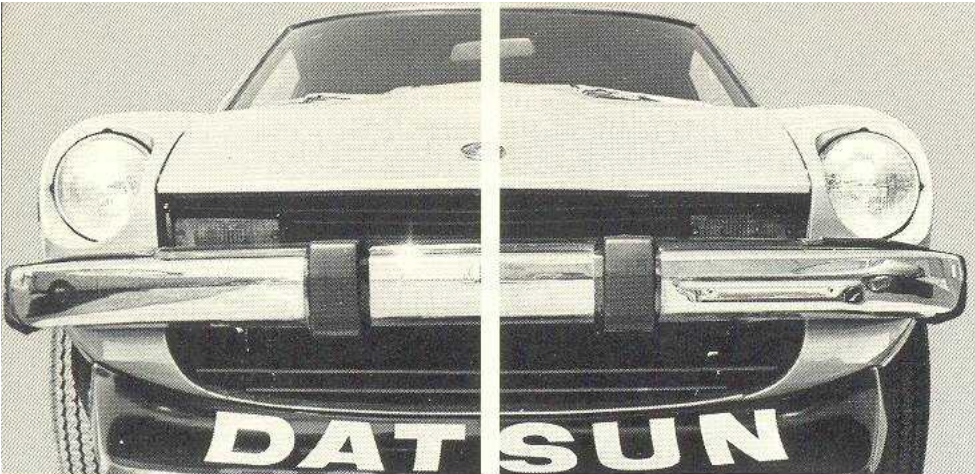
99996-00N60 N60	Regular Gap Plugs	1
-----------------	-------------------	---

Note: The G Series and N60 Series Plugs are of the non-projected nose type.

99996-N6732 .096	Spark Plug Spacers	1
99996-0N677 .135	Spark Plug Spacers	1

SPECIAL TOOLS

ST106-40001	19 mm Crows Foot for use on L-Series Engine Valve Adjuster Jam Nut.	
-------------	---	--



**D
A
T
S
U
N**

**U
N**

part number	description	quantity
POSTERS		
99996-P0001	Oly, Lil' Hustler Off Road Trucks (set of 4)	1
99996-P0002	A montage of Racing Z-Cars including Bob Sharp's C Production Champion (set of 4)	1
99996-P0003	Dave Frellsen's 710 1974/75 B Sedan Champion (set of 4)	1
99996-P0004	Don Devendorf's B210, 1974/75 C Sedan Champion (set of 4)	1
99996-P1005	Complete Set of all four posters	1

**D
A
T
S
U
N**
**D
A
T
S
U
N**

**D
A
T
S
U
N**
**D
A
T
S
U
N**

99996-H8010	1200 Competition Suspension Book	
99996-M8010	How to Modify Datsun Engines and Chassis	
DATSUN DIE-CUT TRANSFERS		
99996-X1001	Small black transfer, 1½" x 12"	
99996-X1002	Small white transfer, 1½" x 12"	
99996-X1010	Large black transfer, 3½" x 34"	
99996-X1011	Large white transfer, 3½" x 34"	

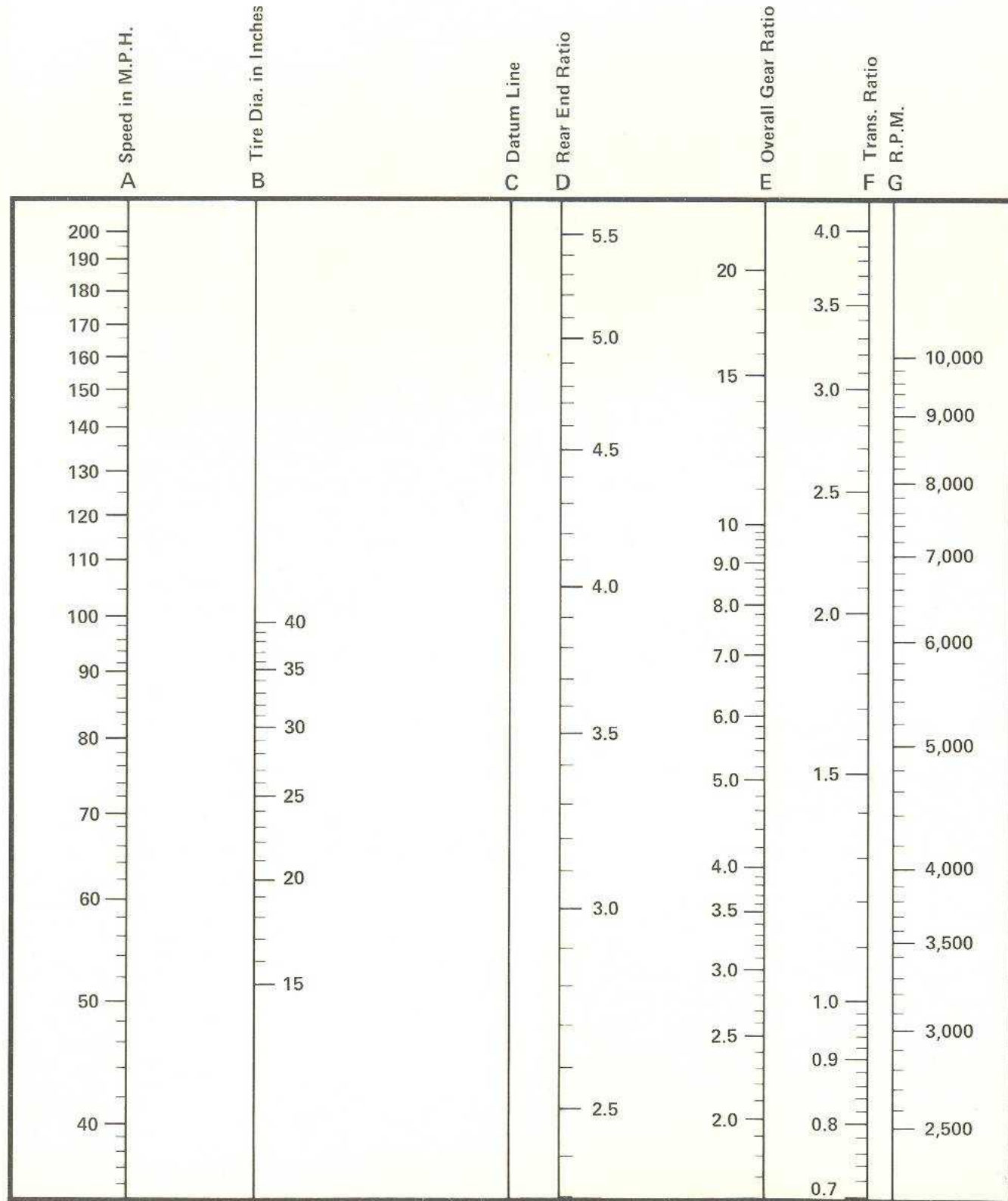
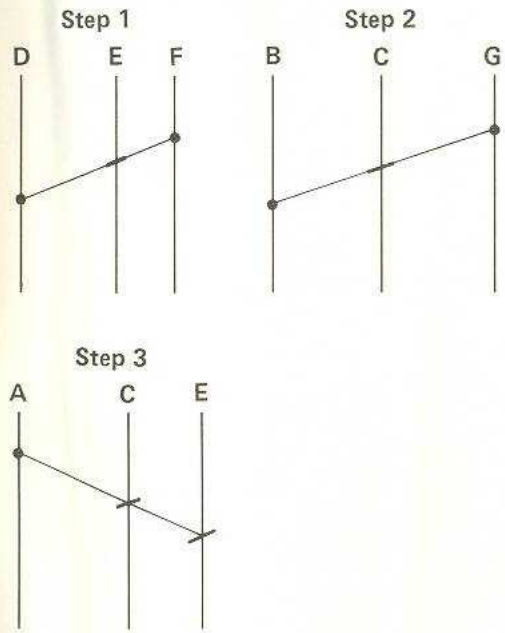
**D
A
T
S
U
N**

**D
A
T
S
U
N**

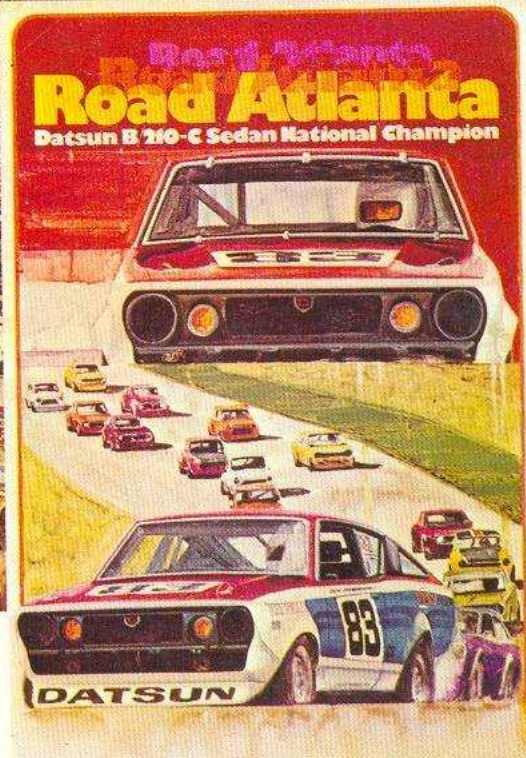
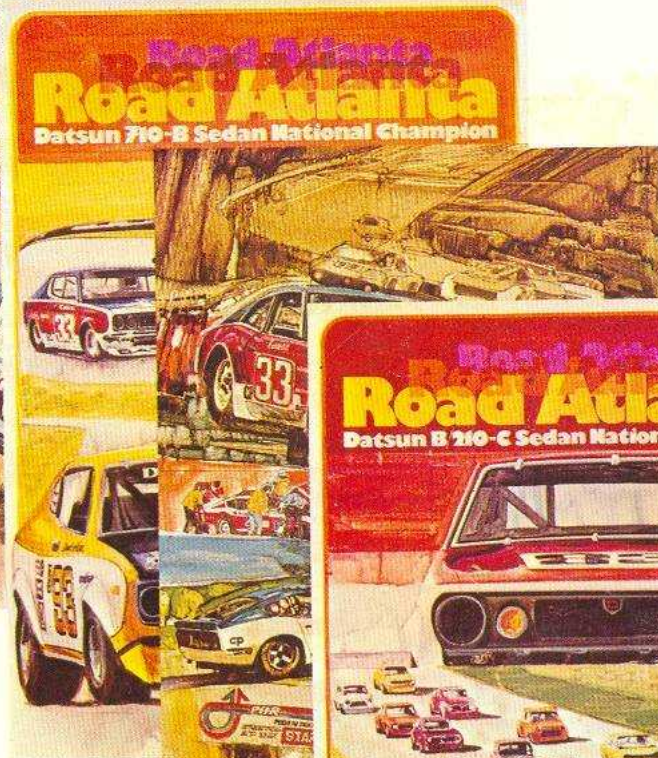
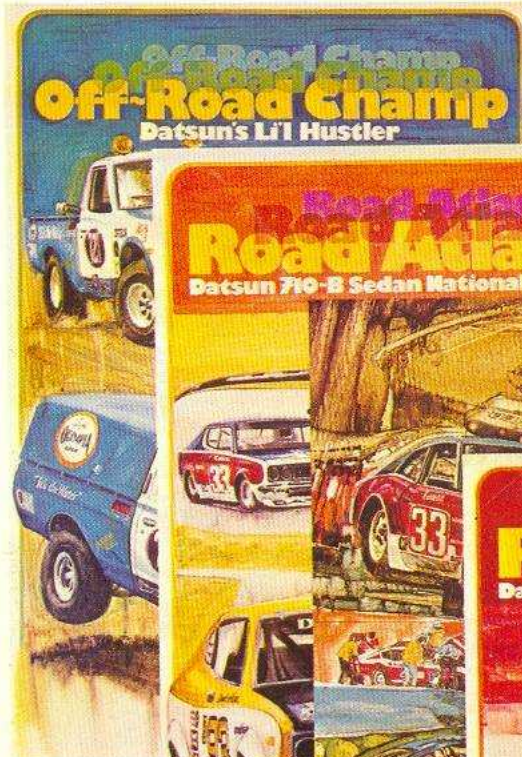
Given: Transmission ratio, Scale F; Rear end ratio, Scale D; R.P.M., Scale G; Tire diameter (in inches) Scale B

Find: Overall gear ratio, Scale E; Speed, Scale A

- Procedure:**
1. Connect known points on Transmission, Scale F and Rear end, Scale D. Mark point at Overall gear ratio, Scale E.
 2. Connect known points on Tire diameter, Scale B and R.P.M., Scale G. Mark point on Datum line, Scale C.
 3. Connect two marked points (Scales C and E) and extend line through Speed, Scale A.

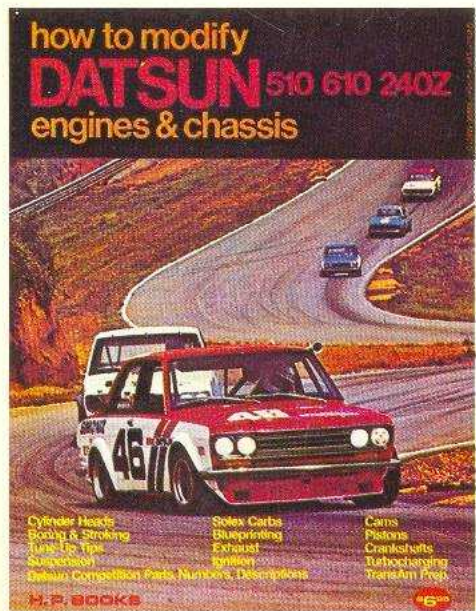


Top speed, Overall Gear Ratio Calculator



DATSUN 1200 COMPETITION SUSPENSION MANUAL

The ultimate race car suspension book. It contains step-by-step instructions, dozens of detailed drawings, and most important, a complete set of working blueprints illustrating every piece necessary to duplicate the suspension of Datsun's 1200 C Sedan Championship car. The blueprints are full scale and complete in every detail. Every dimension, specification and material requirement is called out and all modifications are clearly outlined. The suspension system illustrated in this book was designed to be both inexpensive and easy to fabricate, and it has proven itself repeatedly in competition. Note also, that while the project car illustrated in this manual is a Datsun 1200, the principals outlined will apply to any car with a MacPherson strut front suspension and a live rear axle.



HOW TO MODIFY DATSUN ENGINES AND CHASSIS

One of the most complete, comprehensive manuals available anywhere on preparing a car for racing. The information in this book came from the men who built the Pete Brock and Bob Sharp sedans, and it contains everything you'll need to know in order to duplicate these incredibly successful race cars. Engine modifications — chassis set-up — body work — everything covered in exacting detail. The information in this book applies to all Datsun models using the L Series engine (510, 610, 710, all Z's and the 620 Pickup).

RACE POSTERS

Choose from four, beautifully illustrated posters of Datsun's most successful race cars. These superb reproductions are in full color and all measure over 20 x 30 inches. Posters available: Don Devendorf's B210, 1974/75 C Sedan Champion; Dave Frelsen's 710, 1974/75 B Sedan Champion; a montage of racing Z cars including Bob Sharp's C Production Champion; and the Oly, Lil' Hustler off-road trucks.

Digitalizado por: Américo José Pinho
srpinho@hotmail.com
www.amigosjaponesesantigos.com
2005